



TECHNICAL MANUAL
UNIT AND DIRECT SUPPORT MAINTENANCE
REPAIR PARTS AND SPECIAL TOOLS LIST
FOR

HEATER, SPACE, DIESEL
WITH BLOWER
15,000 BTU/HR, 28VDC
(MODEL UH48-E, TYPE IV)
NSN 4520-01-368-9594

DISTRIBUTION STATEMENT A: Approved for public release; distribution is unlimited.

HEADQUARTERS, DEPARTMENT OF THE ARMY
15 MAY 1995

TECHNICAL MANUAL

NO. 9-4520-260-23P

HEADQUARTERS,
DEPARTMENT OF THE ARMY
WASHINGTON D.C., 15 MAY 1995

TECHNICAL MANUAL

Unit and Direct Support Maintenance
Repair Parts and Special Tools List
For
Heater, Space, Diesel, With Blower
15,000 BTU/HR, 28VDC
(Model UH48E, Type IV)

NSN 4520-01-368-9594

Current as of 3 March 1995

REPORTING ERRORS AND RECOMMENDING IMPROVEMENTS
You can help improve this manual. If you find any mistakes or if you know of a way to improve these procedures, please let us know. Mail your letter, DA Form 2028 (Recommended Changes to Publications and Blank Forms), or DA Form 2028-2 located in the back of this manual directly to: Commander, US Army Aviation and Troop Command, ATTN: AMSAT-I-MP, 4300 Goodfellow Blvd., St. Louis, MO 63120-1798, or you may submit your recommended changes by E-mail directly to <daf2028@st-louis-emh7.army.mil>. A reply will be furnished directly to you.

DISTRIBUTION STATEMENT A: Approved for public release; distribution is unlimited.

TABLE OF CONTENTS

	PAGE	ILLUS/ FIGURE
Section I. Introduction.....	1	
Section II. Repair Parts List.....	1-1	
Group 00. Heater Assembly, UH48-E		
Group 01. Heater Assembly Cover Panel, Louver, and Data Plates		
Heater Housing and Components.....	1-1	1
Control Panel Assembly.....	2-1	2
Group 02. Fuel System		
Fuel Pump, Strainer and Components.....	3-1	3
Carburetor.....	4-1	4
Group 03. Electrical		
Ignition Pack.....	5-1	5
Electronic Control Unit.....	6-1	6
Heater Wiring.....	7-1	7
Group 04. Burner Assembly		
Group 05. Blower/Motor/Vent Assembly		

TABLE OF CONTENTS - Continued

	PAGE	ILLUS/ FIGURE
Group 06. Heat Exchanger		
Burner Head, Blower/MotorVent Assembly and Heat Exchanger	8-1	8
Group 07. Heater Case Assembly		
Heater Case	9-1	9
Group 08. Room Thermostat		
Thermostat and Connectors	10-1	10
Group 09. Bulk Materials List		
Bulk.....	Bulk-1	Bulk
Section III. Special Tools List (Not Applicable)		
Section IV. Cross Reference Index		
National Stock Number Index	I-1	
Part Number Index	I-2	
Figure and Item Number Index	I-6	

**UNIT AND DIRECT SUPPORT MAINTENANCE
REPAIR PARTS AND SPECIAL TOOLS LIST**

SECTION I INTRODUCTION

1. Scope.

This RPSTL lists and authorizes spares and repair parts; special tools; special test, measurement, and diagnostic equipment (TMDE); and other special support equipment required for performance of unit and direct support maintenance of the space heater. It authorizes the requisitioning, issue, and disposition of spares, repair parts, and special tools as indicated by the source, maintenance, and recoverability (SMR) codes.

2. General.

In addition to Section I, Introduction, this Repair Parts and Special Tools List is divided into the following sections:

a. *Section II. Repair Parts List.* A list of spares and repair parts authorized by this RPSTL for use in the performance of maintenance. The list also includes parts which must be removed for replacement of the authorized parts. Parts lists are composed of functional groups in ascending alphanumeric sequence, with the parts in each group listed in ascending figure and item number sequence. Bulk materials are listed in item name sequence. Repair parts kits are listed separately in their own functional group within Section II. Repair parts for repairable special tools are also listed in this section. Items listed are shown on the associated illustration(s)/figure(s).

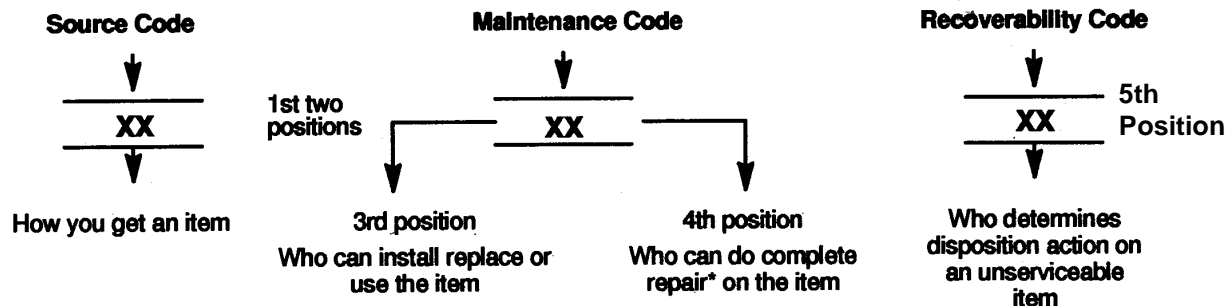
b. *Section III. Special Tools List.* A list of special tools, special TMDE, and other special support equipment authorized by this RPSTL (as indicated by Basis of Issue (BOI) information in DESCRIPTION AND USABLE ON CODE column) for the performance of maintenance.

c. *Section IV. Cross-reference Index.* A list in National item identification number (NIIN) sequence, of all National stock numbered items appearing in the listing, followed by a list in alphanumeric sequence of all part numbers appearing in the listings. National stock numbers and part numbers are cross-referenced to each illustration figure and item number appearance. The figure and item number index lists figure and item numbers in alphanumeric sequence and cross-reference NSN, FSCM and part numbers.

3. Explanation of Columns (Sections II and III).

a. *ITEM NO. (Column (1)).* Indicates the numbers used to identify items called out in the illustration.

b. *SMR CODE (Column (2)).* The Source, Maintenance, and Recoverability (SMR) code is a 5-position code containing supply/requisitioning information, maintenance category authorization criteria, and disposition instructions, as shown in the following breakout:



*Complete Repair: Maintenance capacity, capability, and authority to perform all corrective maintenance tasks of the Repair function in a use/user environment in order to restore serviceability to a failed item.

(1) *Source Code*. The source code tells you how to get an item needed for maintenance, repair, or overhaul of an end item/equipment. Explanations of source codes follow:

<i>Code</i>	<i>Explanation</i>
<div style="border: 1px solid black; padding: 5px; display: inline-block;"> PA PB PC** PD PE PF PG </div>	<p>Stocked items; use the applicable NSN to request/requisition items with these source codes. They are authorized to the category indicated by the code entered in the 3d position of the SMR code.</p> <p>**NOTE: Items coded PC are subject to deterioration.</p>
<div style="border: 1px solid black; padding: 5px; display: inline-block;"> KD KF KB </div>	<p>Items with these codes are not to be requested/requisitioned individually. They are part of a kit which is authorized to the maintenance category indicated in the 3d position of the SMR code. The complete kit must be requisitioned and applied.</p>
<div style="border: 1px solid black; padding: 5px; display: inline-block;"> MO--(Made at org. AVUM Level MF--(Made at DS/ AVUM Level MH--(Made at GS Level) ML--Made at Spe- cialized Repair Activity (SRA) MD--(Made at Depot) </div>	<p>Items with these codes are not to be requested/requisitioned individually. They must be made from bulk material which is identified by the part number in the DESCRIPTION AND USABLE ON CODE (UOC) column and listed in the Bulk Material group of the repair parts list in this RPSTL. If the item is authorized to you by the 3d position code of the SMR code, but the source code indicates it is made at a higher level, order the item from the higher level of maintenance.</p>
<div style="border: 1px solid black; padding: 5px; display: inline-block;"> AO--(Assembled by org/AVUM Level) AF--(Assembled by DS/AVIM Level) AH--(Assembled by GS Category) AL--(Assembled by SRA) AD--(Assembled by Depot) </div>	<p>Items with these codes are not to be requested/requisitioned individually. The parts that make up the assembled item must be requisitioned or fabricated and assembled at the level of maintenance indicated by the source code. If the 3d position code of the SMR code authorizes you to replace the item, but the source code indicates the item is assembled at a higher level, order the item from the higher level of maintenance.</p>

- XA - Do not requisition an "XA"-coded item. Order its next higher assembly. (Also, refer to the NOTE below.)
- XB - If an "XB" item is not available from salvage, order it using the FSCM and part number given.
- XC - Installation drawing, diagram, instruction sheet, field service drawing, that is identified by manufacturer's part number.
- XD - Item is not stocked. Order an "XD"-coded item through normal supply channels using the FSCM and part number given, if no NSN is available.

NOTE: Cannibalization or controlled exchange, when authorized, may be used as a source of supply for items with the above source codes, except for those source coded "XA" or those aircraft support items restricted by requirements of AR 700-42.

(2) *Maintenance Code.* Maintenance codes tell you the level(s) of maintenance authorized to USE and REPAIR support items. The maintenance codes are entered in the third and fourth positions of the SMR code as follows:

(a) The maintenance code entered in the third position tells you the lowest maintenance level authorized to remove, replace, and use an item. The maintenance code entered in the third position will indicate authorization to one of the following levels of maintenance.

<i>Code</i>	<i>Application/Explanation</i>
C - Crew or operator maintenance done within organizational or aviation unit maintenance.	
O - Organizational or aviation unit category can remove, replace, and use the item.	
F - Direct support level or aviation intermediate level can remove, replace, and use the item.	
H - General support level can remove, replace, and use the item.	
L - Specialized repair activity can remove, and use the item.	
D - Depot level can remove, replace, and use the item.	

(b) The maintenance code entered in the fourth position tells whether or not the item is to be repaired and identifies the lowest maintenance level with the capability to do complete repair (i.e., perform all authorized repair functions). (NOTE: Some limited repair may be done on the item at a lower level of maintenance, if authorized by the Maintenance Allocation Chart (MAC) and SMR codes.) This position will contain one of the following maintenance codes.

<i>Code</i>	<i>Application/Explanation</i>
O - Organizational or (aviation unit) is the lowest level that can do complete repair of the item.	
F - Direct support or aviation intermediate is the lowest level that can do complete repair of the item.	
H - General support is the lowest level that can do complete repair of the item.	
L - Specialized repair activity (designate the specialized repair activity) is the lowest level that can do complete repair of the item.	
D - Depot is the lowest level that can do complete repair of the item.	
Z - Nonreparable. No repair is authorized.	
B - No repair is authorized. (No parts or special tools are authorized for the maintenance of a "B" coded item.) However, the item may be reconditioned by adjusting, lubricating, etc., at the user level.	

(3) *Recoverability Code.* Recoverability codes are assigned to items to indicate the disposition action on unserviceable items. The recoverability code is entered in the fifth position of the SMR code as follows:

<i>Recoverability Codes</i>	<i>Application/Explanation</i>
Z - Nonreparable item. When unserviceable, condemn and dispose of the item at the level of maintenance shown in 3rd position of SMR code.	
O - Repairable item. When uneconomically repairable, condemn and dispose of the item at organizational or aviation unit level.	
F - Repairable item. When uneconomically repairable, condemn and dispose of the item at the direct support or aviation intermediate level.	

*Recoverability
Codes*

Application/Explanation

H - Repairable item. When uneconomically repairable, condemn and dispose of the item at general support level.

D - Repairable item. When beyond lower level repair capability, return to depot. Condemnation and disposal of item not authorized below depot level.

L - Repairable item. Condemnation and disposal not authorized below specialized repair activity (SRA).

A - Item requires special handling or condemnation procedures because of specific reasons (e.g., precious metal content, high dollar value, critical material, or hazardous material). Refer to appropriate manuals/directives for specific instructions.

c. *FSCM (Column (3))*. The Federal Supply Code for Manufacturer (FSCM) is a 5-digit numeric code which is used to identify the manufacturer, distributor, or Government agency, etc., that supplies the item.

d. *PART NUMBER (Column (4))*. Indicates the primary number used by the manufacturer (individual, company, firm, corporation, or government activity), that controls the design and characteristics of the item by means of its engineering drawings, specifications, standards, and inspection requirements to identify an item or range of items.

NOTE: When you use a NSN to requisition an item, the item received may have a different part number from the part ordered.

e. *DESCRIPTION AND USABLE ON CODE (UOC) (Column (5))*. This column includes the following information:

(1) The Federal item name and, when required, a minimum description to identify the item.

(2) The physical security classification of the item is indicated by the parenthetical entry (insert applicable physical security classification abbreviation, e.g., Phy Sec CI (C) -Confidential, Phy Sec CI (S) - Secret, Phy Sec CI (T) -Top Secret).

(3) Items that are included in kits and sets are listed below the name of the kit or set.

(4) Spare/repair parts that make up an assembled item are listed immediately following the assembled item line entry.

(5) Part numbers for bulk materials are referenced in this column in the line entry for the item to be manufactured/fabricated.

(6) When the item is not used with all serial numbers of the same model, the effective serial numbers are shown on the last line(s) of the description (before UOC).

(7) The usable on code, when applicable (see paragraph 5, Special Information).

(8) In the Special Tools List section, the basis of issue (BOI) appears as the last line(s) in the entry for each special tool, special TMDE, and other special support equipment. When density of equipments supported exceeds density spread indicated in the basis of issue, the total authorization is increased proportionately.

(9) The statement "END OF FIGURE" appears just below the last item description in Column 5 for a given figure in both Section II and Section III.

f. *QTY (Column (6))*. The QTY (quantity per figure column) indicates the quantity of the item used in the breakout shown on the illustration figure, which is prepared for a functional group, subfunctional group, or an assembly. A "V" appearing in this column in lieu of a quantity indicates that the quantity is variable and the quantity may vary from application to application.

4. Explanation of Columns (Section IV).

a. NATIONAL STOCKNUMBER (NSN) INDEX.

(1) *STOCK NUMBER column.* This column lists the NSN by National item identification number (NIIN) sequence. The NIIN consists of the last nine digits of the NSN (i.e., 5305-01-674-1467). When using this column to locate an item, ignore the first 4 digits of the NSN. However, the complete NSN should be used when ordering items by stock number.

(2) *FIG. column.* This column lists the number of the figure where the item is identified/located. The figures are in numerical order in Section II and Section III.

(3) *ITEM column.* The item number identifies the item associated with the figure listed in the adjacent FIG. column. This item is also identified by the NSN listed on the same line.

b. *PART NUMBER INDEX.* Part numbers in this index are listed by part number in ascending alphanumeric sequence (i.e., vertical arrangement of letter and number combination which places the first letter or digit of each group in order A through Z, followed by the numbers 0 through 9 and each following letter or digit in like order).

(1) *FSCM column.* The Federal Supply Code for Manufacturer (FSCM) is a 5-digit numeric code used to identify the manufacturer, distributor, or Government agency, etc., that supplies the item.

(2) *PART NUMBER column.* Indicates the primary number used by the manufacturer (individual, firm, corporation, or Government activity), which controls the design and characteristics of the item by means of its engineering drawings, specifications standards, and inspection requirements to identify an item or range of items.

(3) *STOCK NUMBER column.* This column lists the NSN for the associated part number and manufacturer identified in the PART NUMBER and FSCM columns to the left.

(4) *FIG column.* This column lists the number of the figure where the item is identified/located in Section II and III.

(5) *ITEM column.* The item number is that number assigned to the item as it appears in the figure referenced in the adjacent figure number column.

c. FIGURE AND ITEM NUMBER INDEX.

(1) *FIG. column.* This column lists the number of the figure where the item is identified/located in Section II and III.

(2) *ITEM column.* The item number is that number assigned to the item as it appears in the figure referenced in the adjacent figure number column.

(3) *STOCK NUMBER column.* This column lists the NSN for the item.

(4) *FSCM column.* The Federal Supply Code for Manufacturer (FSCM) is a 5-digit numeric code used to identify the manufacturer, distributor, or Government agency, etc., that supplies the item.

(5) *PART NUMBER column.* Indicates the primary number used by the manufacturer (individual, firm, corporation, or Government activity), which controls the design and characteristics of the item by means of its engineering drawings, specifications standards, and inspection requirements to identify an item or range of items.

5. Special Information.

a. *USABLE ON CODE.* The usable on code appears in the lower left corner of the Description column heading. Usable on codes are shown as "UOC:" in the Description Column (justified left) on the first line applicable item description/nomenclature. Uncoded items are applicable to all models.

b. *FABRICATION INSTRUCTIONS.* Bulk materials required to manufacture items are listed in the Bulk Material Functional Group of this RPSTL. Part numbers for bulk materials are also referenced in the description column of the line item entry for the item to be manufactured/fabricated. Detailed fabrication instructions for items source codes to be manufactured or fabricated are found in TM 9-4520-260-13.

c. *ASSEMBLY INSTRUCTION.* Detailed assembly instructions for items source coded to be assembled from component spare/repair parts are found in TM 9-4520-260-13. Items that make up the assembly are listed immediately following the assembly item entry or reference is made to an applicable figure.

d. *KITS.* Line item entries for repair parts kits appear in a group in Section II (see table of contents).

e. *INDEXNUMBERS.* Items which have the word BULK in the figure column will have an index number shown in the item number column. This index number is a cross-reference between the National Stock Number/Part Number Index and the bulk material list in Section II.

f. *ASSOCIATED PUBLICATIONS.* The publication(s) listed below pertain to the centrifugal pump unit and its components:

Publication	Short Title
TM 9-4520-260-13	Heater, Space, Diesel

g. *ILLUSTRATIONS- LISTING.* The illustrations in this RPSTL are identical to those published in TM 9-4520-260-13. Only those parts codes "C" or "O" in the third position of the SMR Code are listed in the tabular listing; therefore, there may be a break in the item number sequence. Only illustrations containing organizational or aviation unit authorized items appear in this RPSTL.

6. How to Locate Repair Parts.

a. *When National Stock Number or Part Number is Not Known.*

(1) *First.* Using the table of contents, determine the assembly group or subassembly group to which the item belongs. This is necessary since figures are prepared for assembly groups and subassembly groups, and listings are divided into the same groups.

(2) *Second.* Find the figure covering the assembly group or subassembly group to which the item belongs.

(3) *Third.* Identify the item on the figure and use the Figure and Item Number Index to find the NSN.

b. *When National Stock Number or Part Number is Known.*

(1) *First.* Using the National Stock Number or the Part Number Index, find the pertinent National Stock Number or Part Number. The NSN index is in National Item Identification Number (NIIN) sequence (see 4.1(1)). The part numbers in the Part Number index are listed in ascending alphanumeric sequence (see 4.b). Both indexes cross-reference you to the illustration/figure and item number of the item you are looking for.

(2) *Second.* Turn to the figure and item number, verify that the item is the one you are looking for, then locate the item number in the repair parts list for the figure.

7. **Abbreviations.** All abbreviations are in accordance with MIL-STD-12.

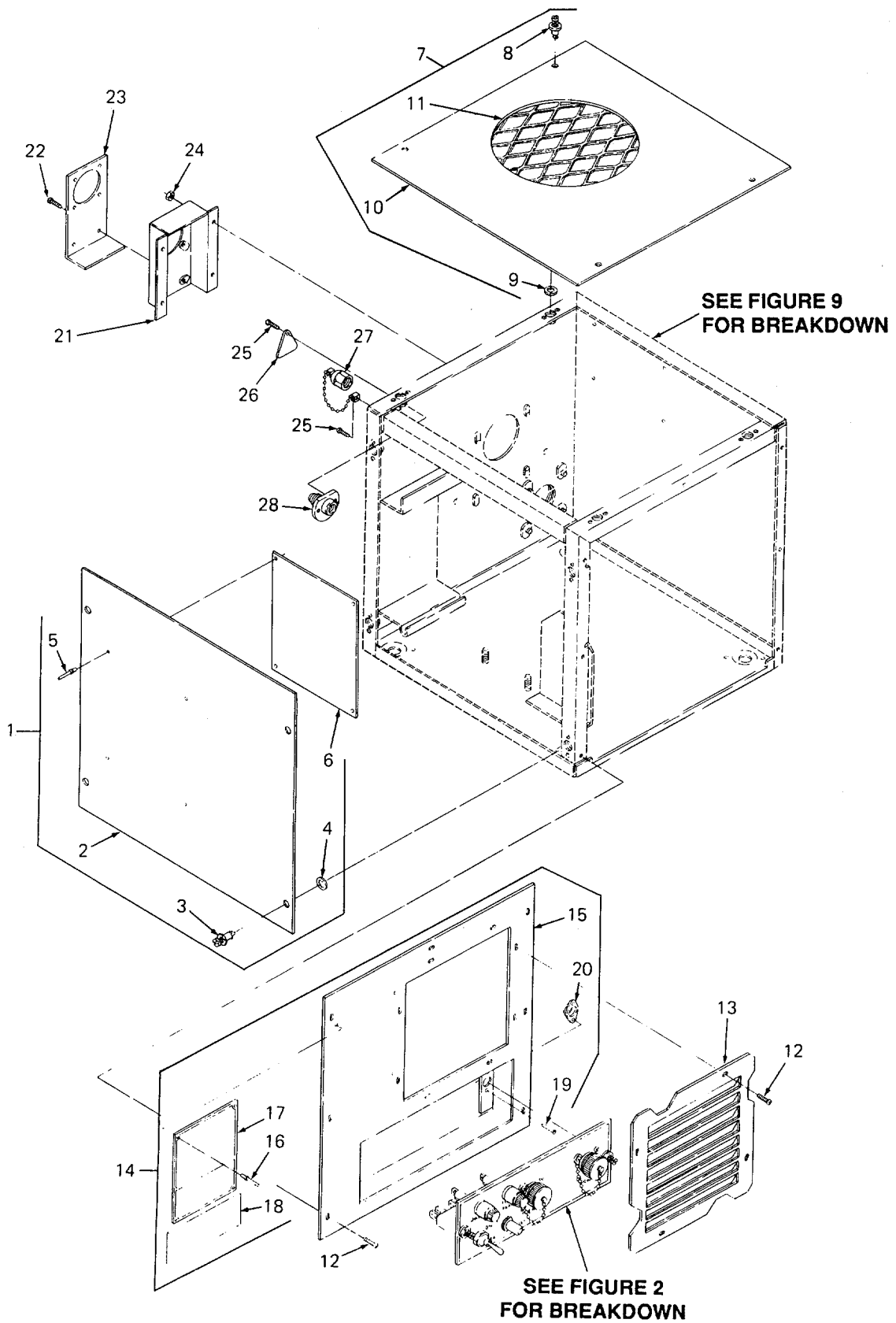


FIGURE 1. Heater Housing and Components

SECTION II

TM 9-4520-260-23P

(1) ITEM NO	(2) SMR CODE	(3) CAGEC	(4) PART NUMBER	(5) DESCRIPTION AND USABLE ON CODES (UOC)	(6) QTY
GROUP 01 HEATER ASSEMBLY COVER PANEL, LOUVER AND DATA PLATES					
FIG. 1 HEATER HOUSING AND COMPONENTS					
1	XBOOO	92878	48273	COVER ASSEMBLY	1
2	XAOZZ	92878	48272	.COVER	1
3	PAOZZ	71286	26S8-3	.STUD ASSEMBLY,TURNL	4
4	PAOZZ	71286	2600LW	.WASHER,LOCK	4
5	PAOZZ	92878	4011	.RIVET, TUBULAR	4
6	XBOZZ	92878	48274	.PLATE,WIRING	1
7	XBOOO	92878	48276	COVER ASSEMBLY	1
8	PAOZZ	71286	26S8-3	.STUD ASSEMBLY,TURNL	4
9	PAOZZ	71286	2600LW	.WASHER,LOCK	4
10	XAOZZ	92878	48275	.COVER	1
11	XAOZZ	92878	48642	.SCREEN	1
12	PAOZZ	33322	03070032-P5	SCREW,ASSEMBLED WAS	15
13	XBOZZ	92878	48227	LOUVER	1
14	XBFFF	92878	48288	FRONT PLATE ASSY	1
15	XAOZZ	92878	48285	.PLATE	1
16	PAOZZ	07707	SD42BS	.RIVET,BLIND	4
17	XBOZZ	92878	48755	PLATE,INSTRUCTION	1
18	XBOZZ	92878	168530	LABEL,CAUTION	1
19	PAFZZ	07707	SD32BS	.RIVET,BLIND	4
20	PAFZZ	71286	212-12D	.RECEPTACLE,TURNLOCK	2
21	PAOZZ	92878	48524	RAIN SHIELD ASSEMBL	1
22	PAOZZ	33322	03010032-P5	SCREW,ASSEMBLED WAS	6
23	PAOZZ	92878	48522	COVER	1
24	PAOZZ	96906	MS35649-264	NUT,PLAIN,HEXAGON	4
25	PAOZZ	33322	03010032-P5	SCREW,ASSEMBLED WAS	2
26	XBOZZ	87148	188	TAG,FUEL INLET	1
27	PAOZZ	92878	168527	SEAL CAP AND CHAIN	1
28	PAFZZ	92878	6833001	FITTING,BULKHEAD	1

END OF FIGURE

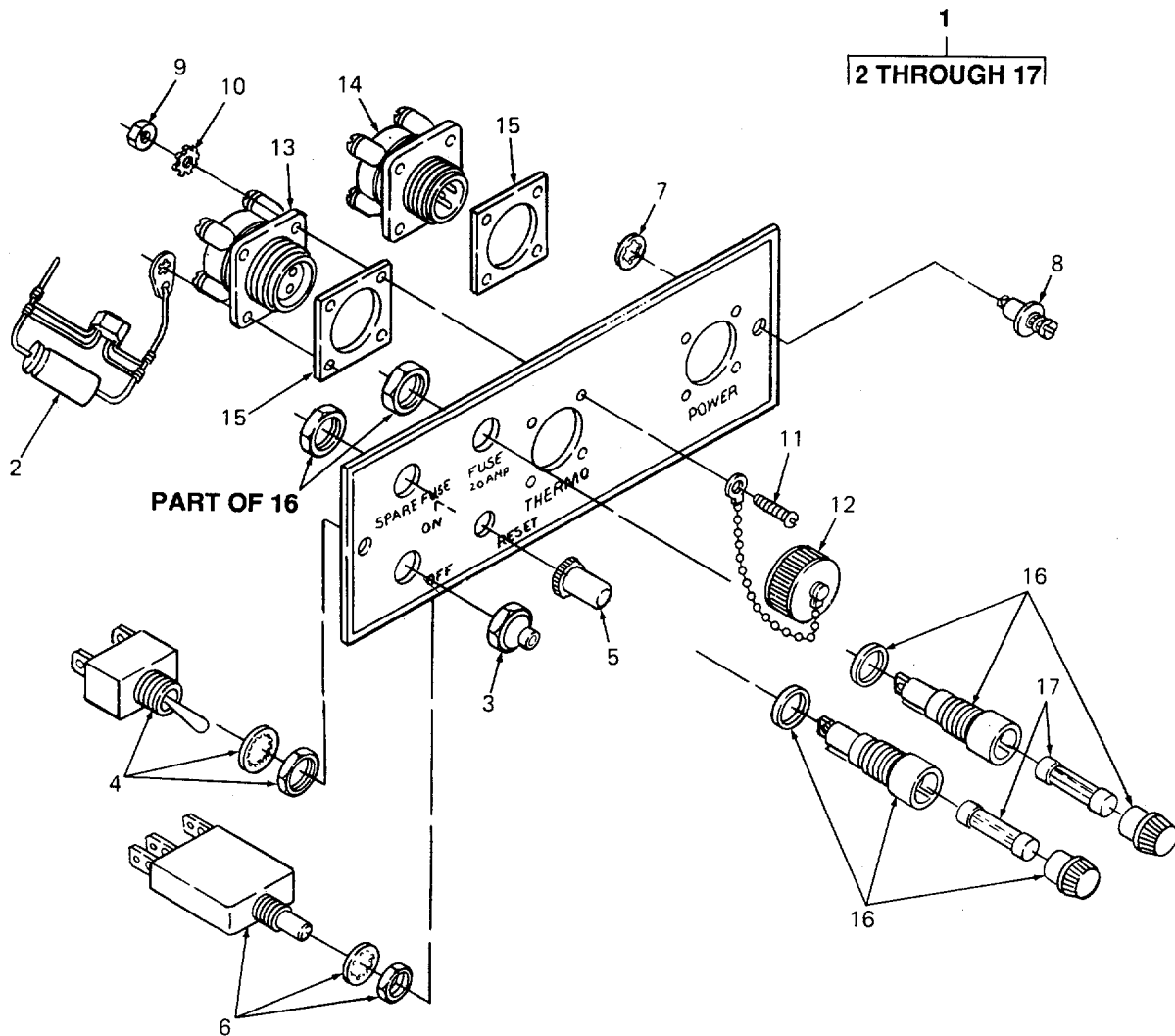


FIGURE 2. Control Panel Assembly

SECTION II

TM 9-4520-260-23P

(1) ITEM NO	(2) SMR CODE	(3) CAGEC	(4) PART NUMBER	(5) DESCRIPTION AND USABLE ON CODES (UOC)	(6) QTY
GROUP 01 HEATER ASSEMBLY COVER PANEL, LOUVER AND DATA PLATES					
FIG. 2 CONTROL PANEL ASSEMBLY					
1	PBOOO	92878	48085	PANEL, CONTROL.....	1
2	PAOZZ	92878	48741	.CAPACITOR ASSEMBLY.....	1
3	PAOZZ	81349	M5423/02-01	.BOOT,DUST AND MOIST.....	1
4	PAOZZ	96906	MS35058-22	.SWITCH,TOGGLE.....	1
5	PAOZZ	06402	N 1 480 08	.BOOT,RESET SEAL.....	1
6	PAOZZ	06402	4500700IGIPA3401 .185	.CIRCUIT BREAKER.....	1
7	PAOZZ	71286	2600LW	.WASHER,LOCK.....	2
8	PAOZZ	71286	26S8-3	.STUD ASSEMBLY,TURNL.....	2
9	PAOZZ	96906	MS35649-244	.NUT,PLAIN,HEXAGON.....	8
10	PAOZZ	96906	MS35335-57	.WASHER,LOCK.....	8
11	PAOZZ	96906	MS51957-17	.SCREW,MACHINE.....	8
12	PAOZZ	02660	9760-14	.COVER,ELECTRICAL CO.....	2
13	PAOZZ	96906	MS3450W14S-7SX4	.CONNECTOR,RECEPTAC.....	1
14	PAOZZ	96906	MS3450W14S-7P	.CONNECTOR,RECEPTAC.....	1
15	XBOZZ	92878	48051	.GASKET.....	2
16	PAOZZ	81349	FHN26G1	.FUSEHOLDER, EXTRACTO.....	2
17	PAOZZ	81349	F02A32V20A	.FUSE,CARTRIDGE.....	2

END OF FIGURE

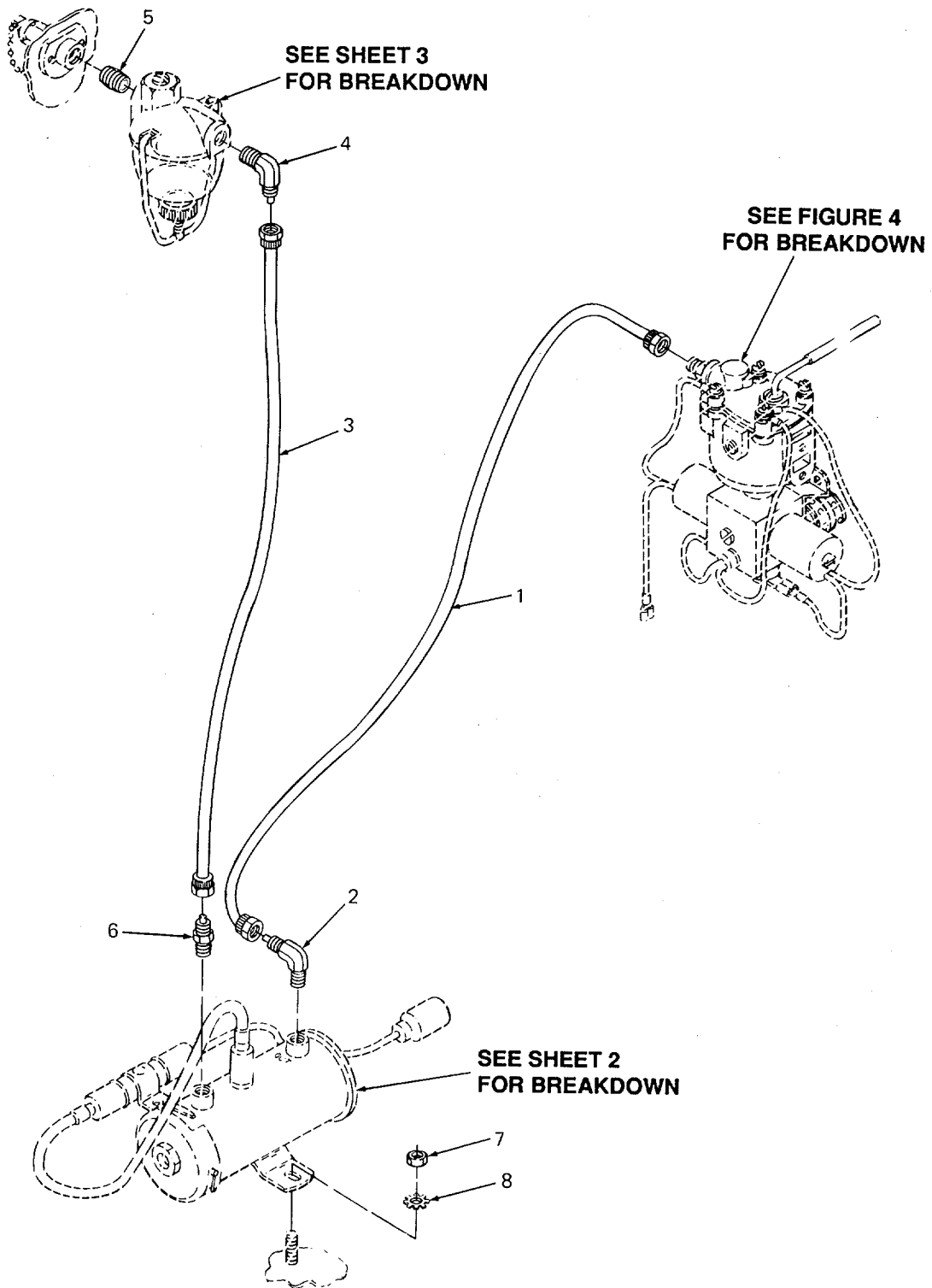


FIGURE 3. Fuel Pump, Strainer, and Components (Sheet 1 of 3)

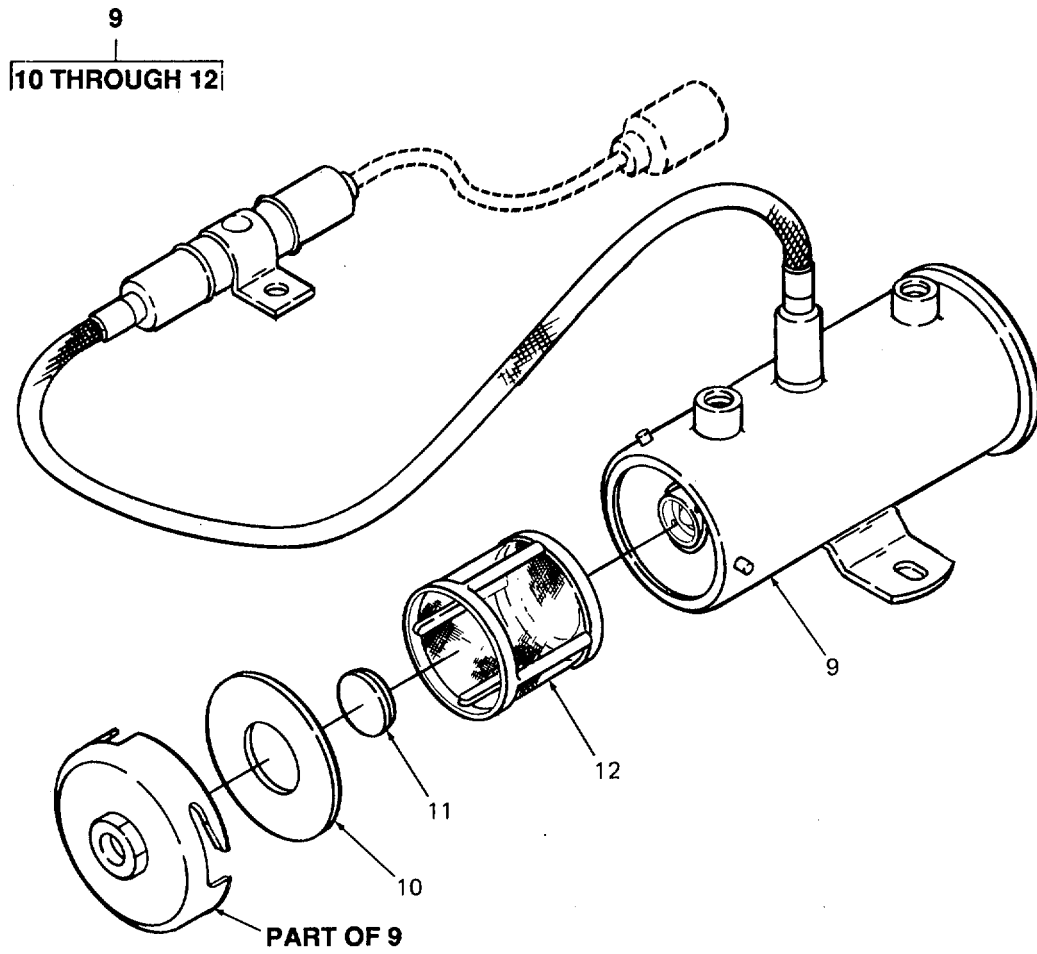


FIGURE 3. Fuel Pump, Strainer, and Components (Sheet 2)

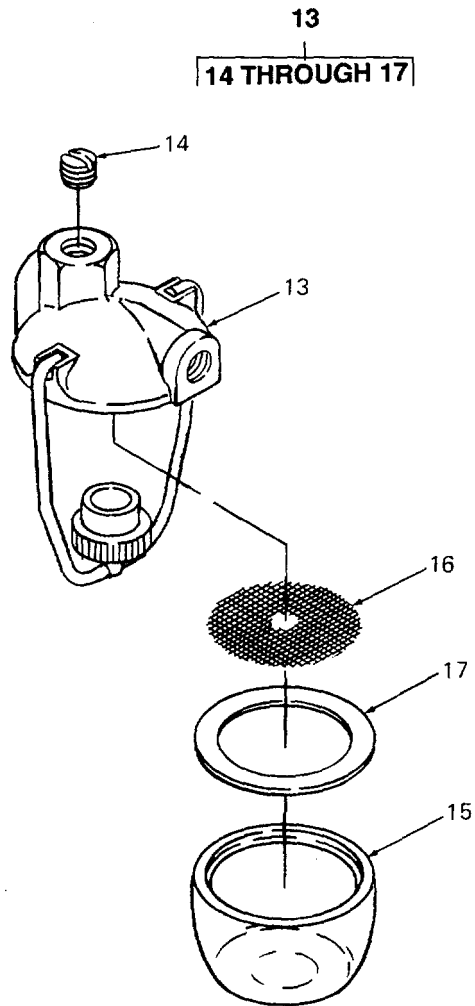


FIGURE 3. Fuel Pump, Strainer, and Components (Sheet 3)

SECTION II

(1) ITEM NO	(2) SMR CODE	(3) CAGEC	(4) PART NUMBER	(5) DESCRIPTION AND USABLE ON CODES (UOC)	(6) QTY
-------------------	--------------------	--------------	-----------------------	--	------------

GROUP 02 FUEL SYSTEM

FIG. 3 FUEL PUMP, STRAINER AND COMPONENTS

1	MOOZZ	92878	10664-12	HOSE, NONMETALLIC MAKE FROM BULK P/ N 4212-435 (85757) CUT TO 12 INCH.....	1
2	PAOZZ	30327	269-P 1/4 X 1/8	ELBOW, PIPE TO TUBE	1
3	MOOZZ	92878	10664-9	HOSE, NONMETALLIC MAKE FROM BULK P/ N 4212-435 (85757) CUT TO 9 INCH.....	1
4	PAOZZ	30327	269-P 1/4 X 1/8	ELBOW, PIPE TO TUBE	1
5	PAOZZ	96906	MS51846-1	NIPPLE, PIPE	1
6	PAOZZ	09505	268P	CONNECTOR, MALE	1
7	PAOZZ	96906	MS35649-2254	NUT, PLAIN, HEXAGON	2
8	PAOZZ	96906	MS35335-61	WASHER, LOCK	2
9	PBOZZ	96906	MS51321-1	PUMP, FUEL, ELECTRICAL	1
10	XBOZZ	19207	7413774	.GASKET	1
11	XBOZZ	92878	479012	.MAGNET	1
12	PAOZZ	90005	06R018-027	.FILTER, PUMP	1
13	PBOOZ	96906	MS51086-1	STRAINER, SEDIMENT	1
14	PAOZZ	92878	170002	.PLUG, PIPE	1
15	XBOZZ	92878	65-248	.BOWL	1
16	PAOZZ	92878	95-192	.SCREEN, STRAINER	1
17	PAOZZ	96906	MS51091-4	.GASKET	1

END OF FIGURE

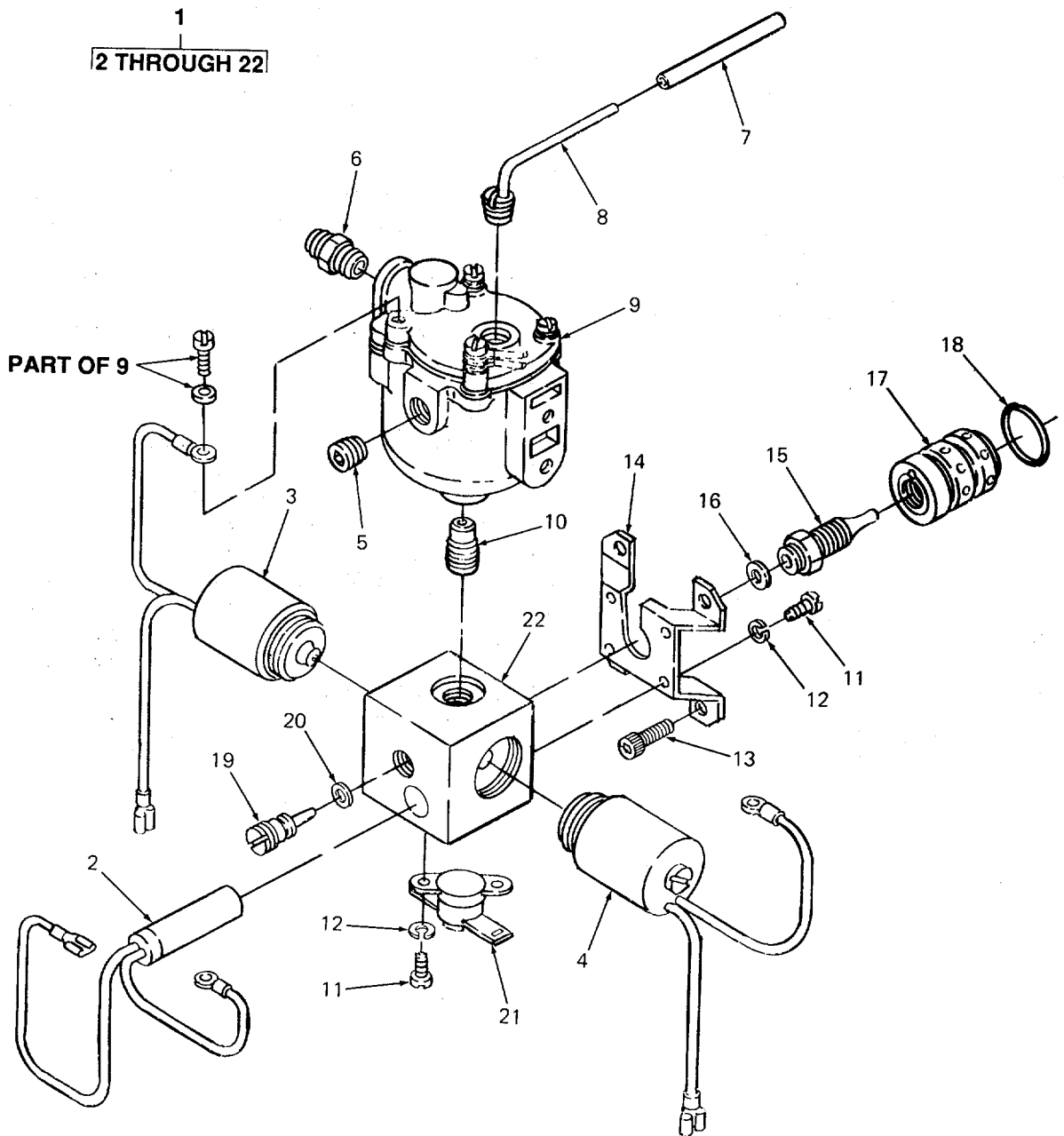


FIGURE 4. Carburetor

SECTION II

(1) ITEM NO	(2) SMR CODE	(3) CAGEC	(4) PART NUMBER	(5) DESCRIPTION AND USABLE ON CODES (UOC)	(6) QTY
GROUP 02 FUEL SYSTEM					
FIG 4 CARBURETOR					
1	PAFFF	92878	50632-48	CARBURETOR	1
2	PAFZZ	92878	5970	.HEATER, CARTRIDGE	1
3	PAFZZ	92878	5062801	.SOLENOID, FUEL	1
4	PAFZZ	92878	5062901	.SOLENOID, CHOKE	1
5	PAFZZ	92878	49384	.PLUG, PIPE	1
6	PAFZZ	93061	68CA-4-2	.ADAPTER, STRAIGHT, PI	1
7	XBFZZ	92878	10512-01	.TUBING, NONMETALLIC	1
8	PAFZZ	92878	47971	.FITTING, OVERFLOW	1
9	PAFZZ	96152	013440	.FLOAT, CARBURETOR	1
10	XBFZZ	92878	49031	.ORIFICE	1
11	XBFZZ	92878	5404	.SCREW, MACHINE	6
12	PAFZZ	96906	MS35333-154	.WASHER, LOCK	6
13	PAFZZ	96906	MS16995-25	SCREW, CAP, SOCKET HE	4
14	XBFZZ	92878	49032	.BRACKET	1
15	XBFZZ	92878	49419	.JET, FUEL	1
16	PAFZZ	92878	49323	.SHIELDING GASKET, EL	1
17	PAFZZ	92878	48113-02	.MIXER, FUEL	1
18	PAFZZ	81349	M83248/1-018	.PACKING, PREFORMED	1
19	XBFZZ	92878	49189	.NEEDLE, FUEL	1
20	PAFZZ	27877	568-006	.PACKING, PREFORMED	1
21	PAFZZ	92878	52337	.SWITCH, THERMOSTATIC	1
22	XAFZZ	92878	49401	.BODY, CARBURETOR	1

END OF FIGURE

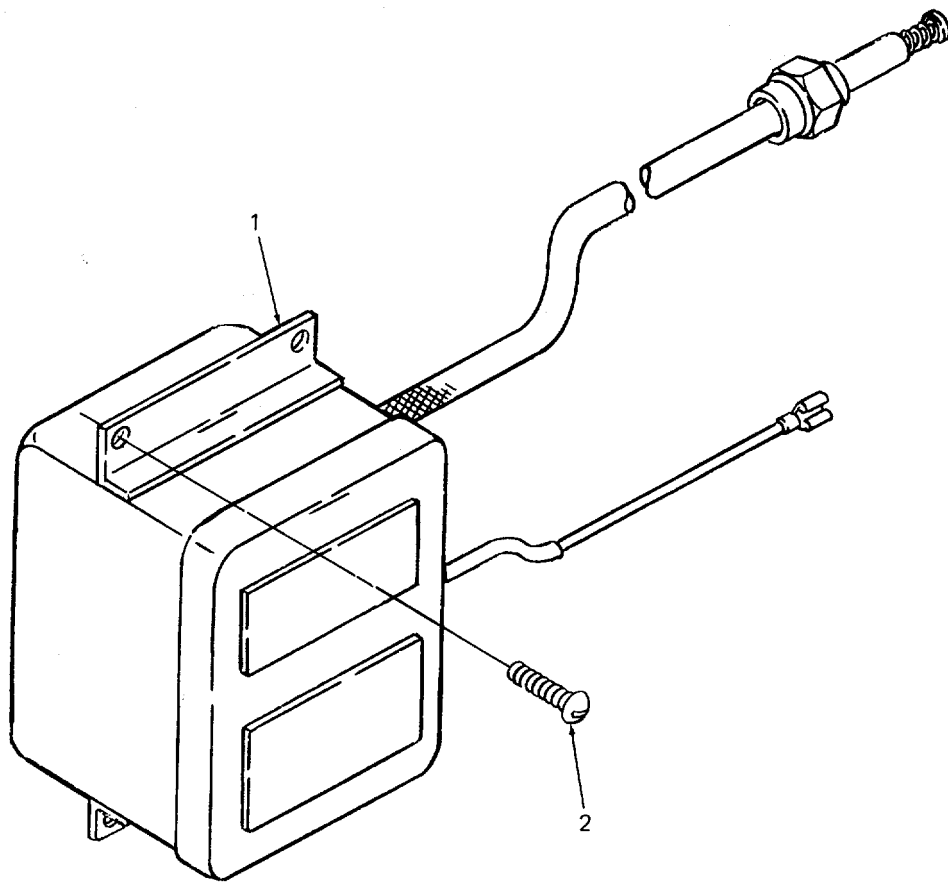


FIGURE 5. Ignition Pack

SECTION II

TM 9-4520-260-23P

(1) ITEM NO	(2) SMR CODE	(3) CAGEC	(4) PART NUMBER	(5) DESCRIPTION AND USABLE ON CODES (UOC)	(6) QTY
-------------------	--------------------	--------------	-----------------------	--	------------

GROUP 03 ELECTRICAL

FIG. 5 IGNITION PACK

1	PAFZZ	92878	4941001	IGNITION, PACK	1
2	PAFZZ	33322	03010032-P5	SCREW, ASSEMBLED WAS	2

END OF FIGURE

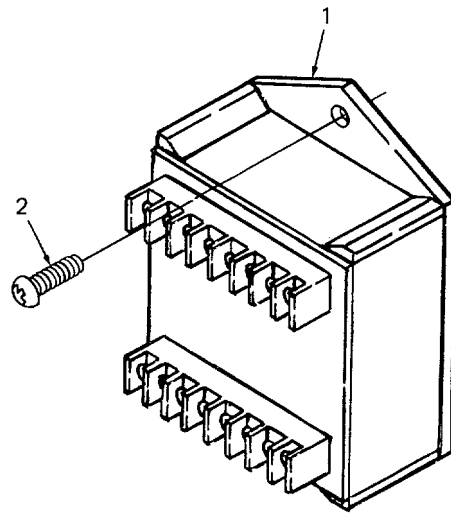


FIGURE 6. Electronic Control Unit

SECTION II

TM 9-4520-260-23P

(1) ITEM NO	(2) SMR CODE	(3) CAGEC	(4) PART NUMBER	(5) DESCRIPTION AND USABLE ON CODES (UOC)	(6) QTY
-------------------	--------------------	--------------	-----------------------	--	------------

GROUP 03 ELECTRICAL

FIG 6 ELECTRONIC CONTROL UNIT

1	PAFZZ	0LLG1	48375	ELECTRONIC CONTROL	1
2	PAFZZ	33322	03010032-P5	SCREW, ASSEMBLED WAS	2

END OF FIGURE

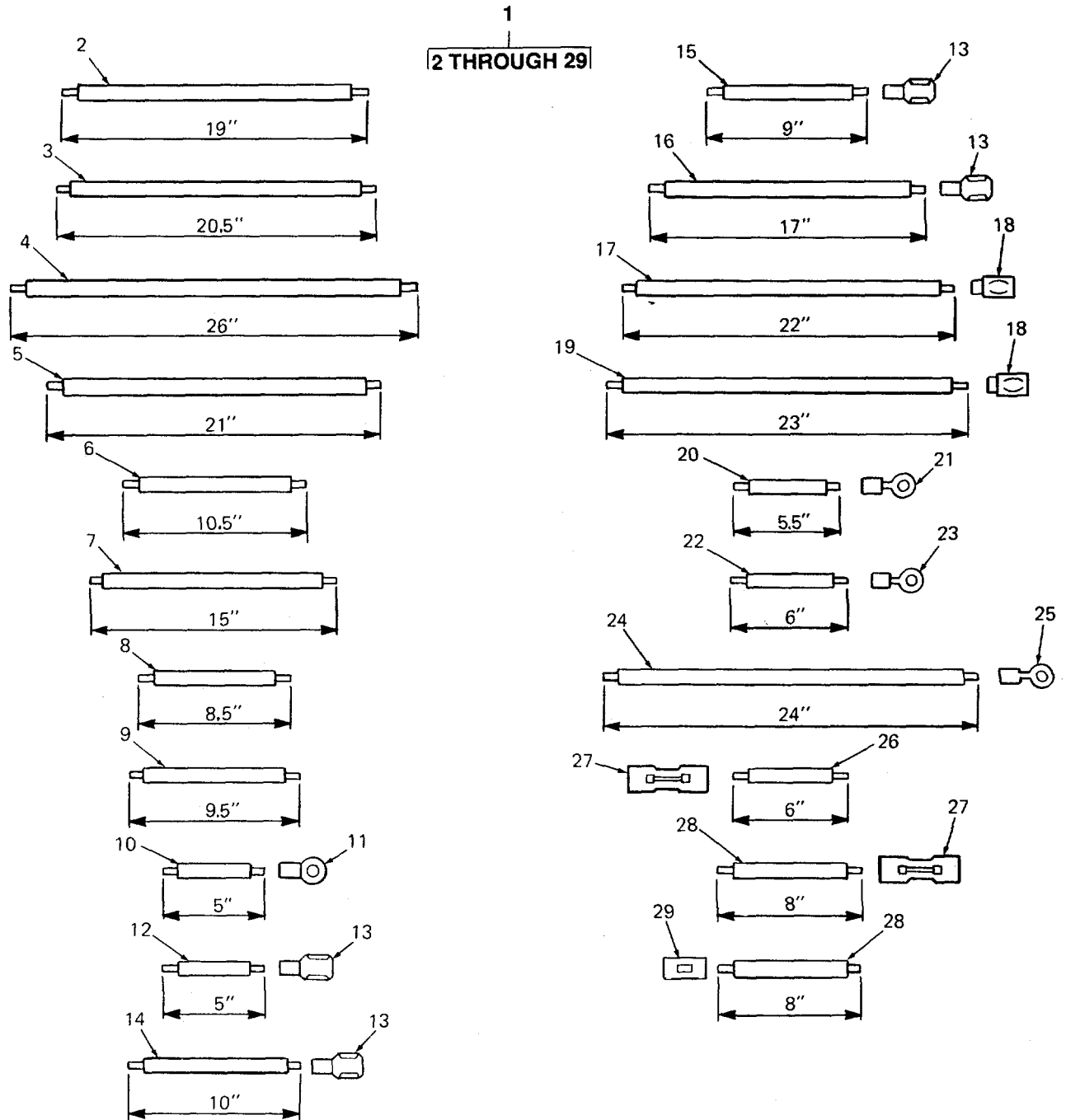


FIGURE 7. Heater Wiring

SECTION II

TM 9-4520-260-23P

(1) ITEM NO	(2) SMR CODE	(3) CAGEC	(4) PART NUMBER	(5) DESCRIPTION AND USABLE ON CODES (UOC)	(6) QTY
GROUP 03 ELECTRICAL					
FIG. 7 HEATER WIRING					
1	XCOZZ	92878	48260	WIRING LIST	1
2	MOOZZ	92878	10772-19	.WIRE, ELECTRICAL	1
3	MOOZZ	92878	10895-20.5	.WIRE, ELECTRICAL MAKE FROM BULK P/	1
				N M22759/11-16-0 (81349) CUT TO 20.5 INCH	
4	MOOZZ	92878	10771-26	.WIRE, ELECTRICAL MAKE FROM BULK P/	1
				N M16878/1BJE8 (81349) CUT TO 26.0 IN.	
5	MOOZZ	92878	10898-21	.WIRE, ELECTRICAL MAKE FROM BULK P/	1
				N M22759/11-16-7 (81349) CUT TO 21 91.0 INCH	
6	MOOZZ	92878	10766-10.5	.WIRE, ELECTRICAL MAKE FROM BULK P/	1
				N M16878/1BJE3 (81349) CUT TO 10.5 IN.	
7	MOOZZ	92878	10769-15	.WIRE, ELECTRICAL MAKE FROM BULK P/	1
				N M16878/1BJE6 (81349) CUT TO 15.0 IN.	
8	MOOZZ	92878	10769-8.5	.WIRE, ELECTRICAL MAKE FROM BULK P/	1
				N M16878/1BJE6 (81349) CUT TO 8.5 IN.	
9	MOOZZ	92878	10774-9.5	.WIRE, ELECTRICAL MAKE FROM BULK P/	
				N M16878/1BJE2 (81349) CUT TO 9.5 IN.	
10	MOOZZ	92878	10768-5	.WIRE, ELECTRICAL MAKE FROM BULK P/	2
				N M16878/1BJE5 (81349) CUT TO 5.0 IN	
11	PAOZZ	96906	MS25036-101	.TERMINAL, LUG.....	2
12	MOOZZ	92878	10774-5	.WIRE, ELECTRICAL MAKE FROM BULK P/	1
				N M16878/1BJE2 (81349) CUT TO 5.0 IN	
13	PAOZZ	98410	BB8141	.TERMINAL, QUICK DISC	4
14	MOOZZ	92878	10818-10	.WIRE, ELECTRICAL MAKE FROM BULK P/	1
				N M16878/1BGE9 (81349) CUT TO 10.0 INCH.	
15	MOOZZ	92878	10766-9	.WIRE, ELECTRICAL MAKE FROM BULK P/	1
				N M16878/1BJE3 (81349) CUT TO 9.0 IN	
16	MOOZZ	92878	10769-17	.WIRE, ELECTRICAL MAKE FROM BULK P/	1
				N M16878/1BJE6 (81349) CUT TO 17.0 IN.	
17	MOOZZ	92878	10781-22	.WIRE, ELECTRICAL MAKE FROM BULK P/	1
				N M16878/1BJE9 (81349) CUT TO 22.0 IN.	
18	PAOZZ	75307	C-54-503	.TERMINAL, QUICK DISC	2
19	MOOZZ	92878	10767-23.5	.WIRE, ELECTRICAL MAKE FROM BULK P/	1
				N M16878/1BJE1 (81349) CUT TO 23.5 IN.	
20	MOOZZ	92878	10770-5.5	.WIRE, ELECTRICAL MAKE FROM BULK P/	1
				N M16878/1BJE4 (81349) CUT TO 5.5 IN	
21	PAOZZ	96906	MS25036-102	.TERMINAL, LUG.....	1
22	MOOZZ	92878	10772-6	.WIRE, ELECTRICAL MAKE FROM BULK P/	1
				N M16878/1BJE0 (81349) CUT TO 6.0 IN	
23	PAOZZ	00779	34113	.TERMINAL, LUG.....	1

SECTION II

(1) ITEM NO	(2) SMR CODE	(3) CAGEC	(4) PART NUMBER	(5) DESCRIPTION AND USABLE ON CODES (UOC)	(6) QTY
24	MOOZZ	92878	10772-24	.WIRE, ELECTRICAL MAKE FROM BULK P/..... N M16878/1BJEO (81349) CUT TO 24.0 IN.....	1
25	PAOZZ	14726	R4161FT	.TERMINAL.....	1
26	MOOZZ	92878	10781-6	.WIRE, ELECTRICAL MAKE FROM BULK P/..... N M16878/1BJE9 (81349) CUT TO 6.0 IN	1
27	PAOZZ	14726	B-1870BN	.SPLICE, CONDUCTOR	2
28	MOOZZ	92878	10781-8	.WIRE, ELECTRICAL MAKE FROM BULK P/..... N M16878/1BJE9 (81349) CUT TO 8.0 IN	2
29	PAOZA	96906	MS27144-1	.CONNECTOR, PLUG, ELEC	1

END OF FIGURE

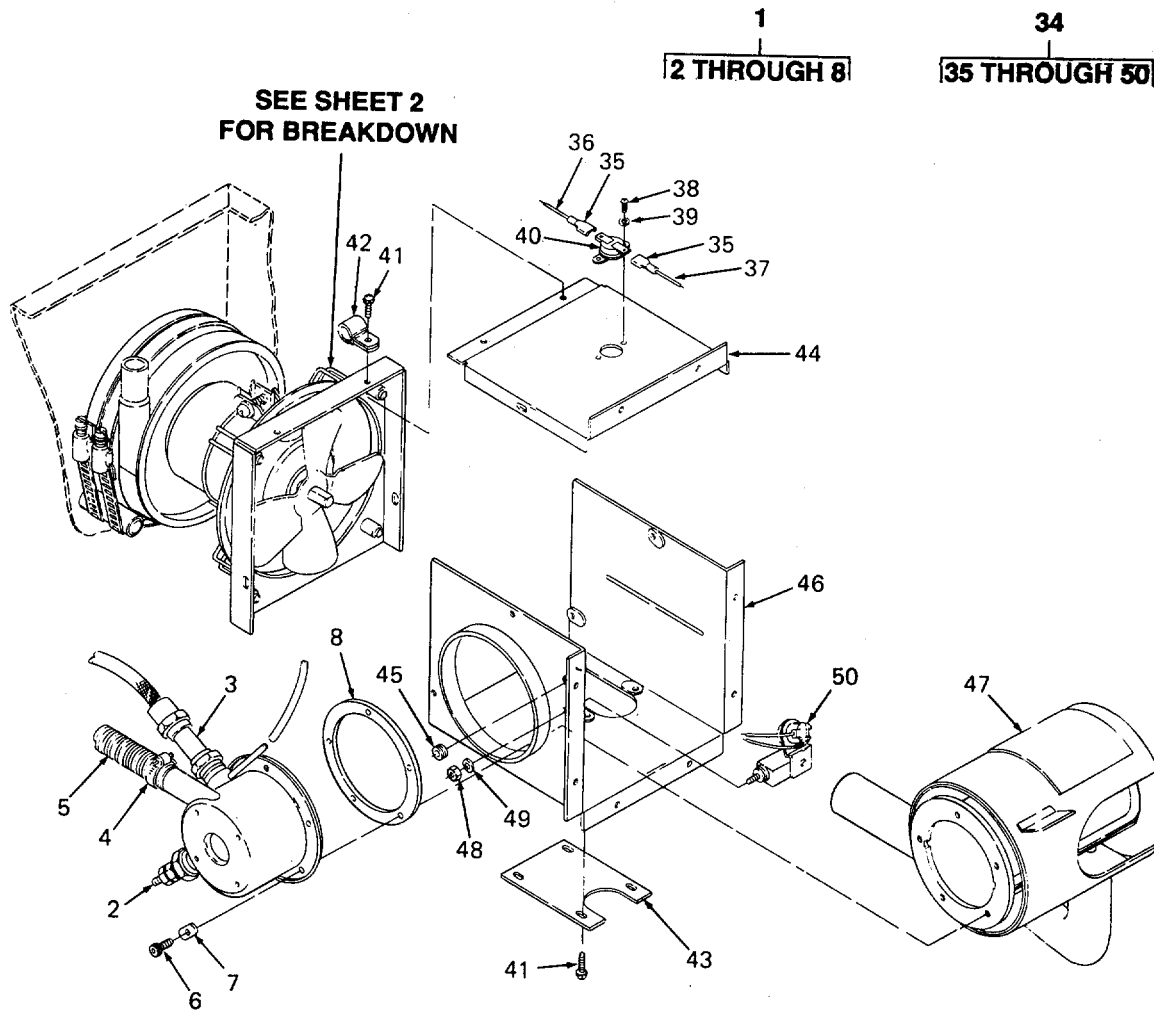


FIGURE 8. Burner Head, Blower Motor/Vent Assembly, and Heat Exchanger (Sheet 1 of 2)

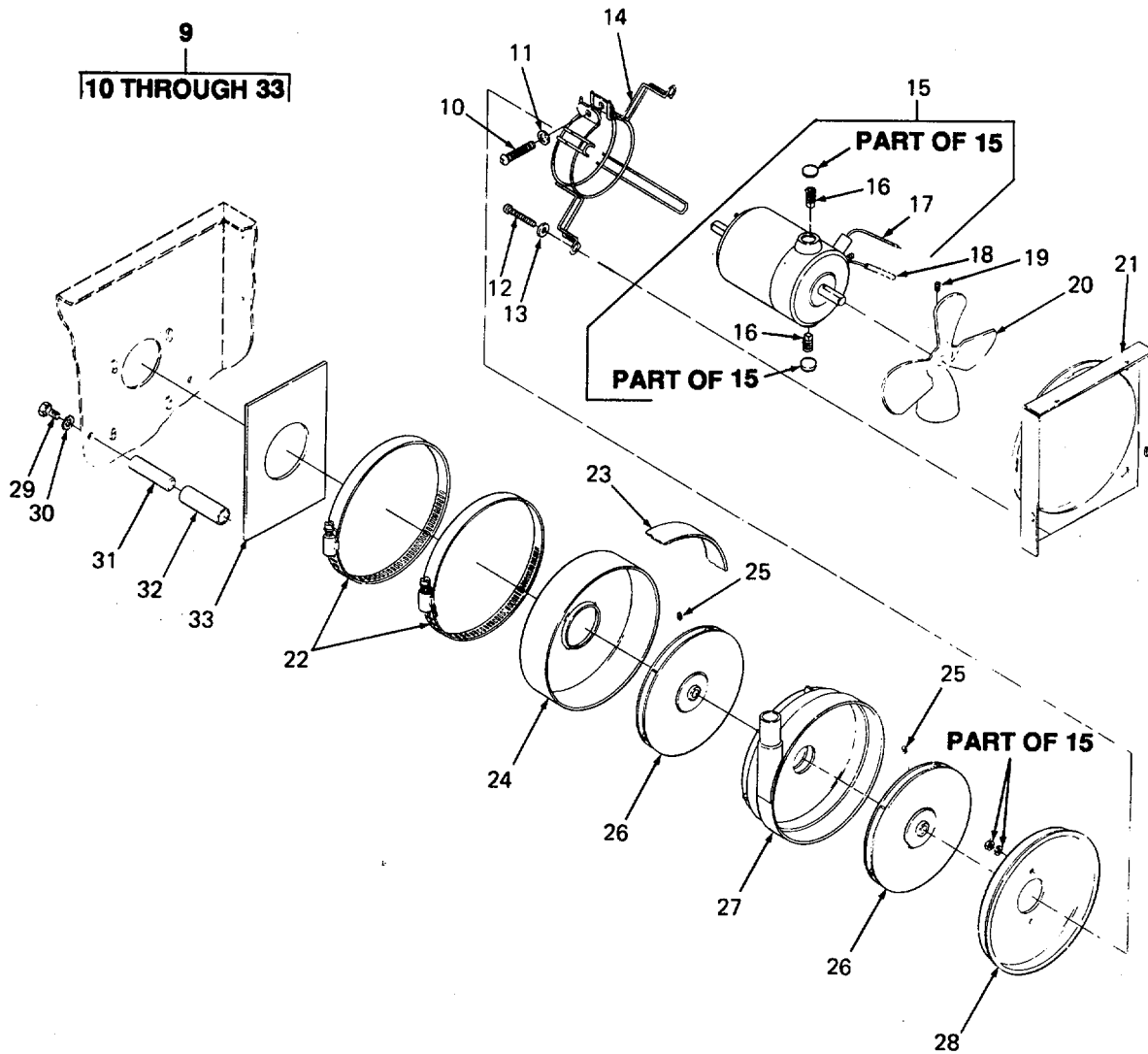


FIGURE 8. Burner Head, Blower/Motor/Vent Assembly, and Heat Exchanger (Sheet 2)

SECTION II					
(1)	(2)	(3)	(4)	(5)	(6)
ITEM NO	SMR CODE	CAGEC	PART NUMBER	DESCRIPTION AND USABLE ON CODES (UOC)	QTY
GROUP 06 HEAT EXCHANGER					
FIG. 8 BURNER HEAD, BLOWER/MOTOR/VENT ASSEMBLY AND HEAT EXCHANGER					
1	XBFFF	92878	49320	BURNER ASSEMBLY	1
2	PAOZZ	11583	CH47	GLOW PLUG	1
3	PAOZZ	92878	168681	IGNITER, SPARK, FUEL	1
4	PAOZZ	96906	MS35842-11	CLAMP, HOSE	2
5	PAOZZ	92878	49342-02	HOSE, AIR DUCT	1
6	PAFZZ	96906	MS16995-25	SCREW, CAP, SOCKET HE	5
7	XBFZZ	92878	168680	PAD, PRESSURE	5
8	PAFZZ	92878	49093	GASKET	1
9	XBFFF	92878	48228	MOTOR AND FAN ASSEM.....	1
10	PAFZZ	96906	MS51957-84	.SCREW, MACHINE	1
11	PAFZZ	96906	MS35333-74	.WASHER, LOCK	1
12	PAFZZ	96906	MS51957-68	.SCREW, MACHINE	4
13	PAFZZ	96906	MS27183-42	.WASHER, FLAT	4
14	XBFZZ	39766	XC206	.MOUNT, MOTOR	1
15	PAFZZ	62119	YZ1U020K	.MOTOR, DIRECT CURREN	1
16	PAOZZ	62119	2ST18A	..BRUSH, MOTOR	2
17	PAFZZ	62119	170816	..CAPACITOR, FIXED	1
18	XBFZZ	27345	21	.TUBING, NONMETALIC	1
19	PAFZZ	96906	MS51023-48	..SETSCREW	1
20	XBFZZ	60399	0-5520-4	.FAN	1
21	XBFZZ	92878	49399	.MOUNT, FAN	1
22	PAFZZ	96906	MS35842-14	CLAMP, HOSE	2
23	PAFZZ	99742	P-69 2 IN.	.TAPE, PRESSURE SENSI	2
24	XBFZZ	75511	10-3794	.HOUSING, BLOWER.....	1
25	PAFZZ	96906	MS51021-32	..SETSCREW	2
26	XBFZZ	92878	47413	.WHEEL BLOWER ASSY	2
27	XBFZZ	92878	48528	.FAN, AIR S/A.....	1
28	XBFZZ	92878	48715	.PLATE, BLOWER BACK	1
29	PAFZZ	80204	B1821BH025C050N	SCREW, CAP, HEXAGON H	2
30	PAFZZ	96906	MS45904-69	WASHER, LOCK	2
31	XBFZZ	92878	170308	PIN, MOUNTING	2
32	PAFZZ	92878	10619-05	TUBING, RUBBER	1
33	XBFZZ	92878	49385	.GASKET	1
34	XBFFF	92878	52356	HEAT, EXCHANGER ASSE.....	1
35	PAOZZ	75307	C-54-503	.TERMINAL, QUICK DISC	2
36	MOOZZ	92878	10781-22	.WIRE, ELECTRICAL MAKE FROM BULK P/.....	1
37	MOOZZ	92878	10767-23.5	.WIRE, ELECTRICAL MAKE FROM BULK P/..... N M16878/1BJE9 (81349) CUT TO 22 INCH..... N M16878/1BJE1 (81349) CUT TO 23.5 IN	1
38	PAOZZ	96906	MS51861-22C	.SCREW, TAPPING.....	2
39	PAOZZ	96906	MS35333-154	.WASHER, LOCK	2
40	PAOZZ	92878	4347	.SWITCH, THERMOSTATIC	1
41	PAFZZ	33322	J3010032-P5	SCREW, ASSEMBLED WAS	6
42	PAFZZ	78553	C-4980A4-35	CLAMP, LOOP	2
43	XBFZZ	92878	52357	.COVER, EXHAUST	1

SECTION II

TM 9-4520-260-23P

(1) ITEM NO	(2) SMR CODE	(3) CAGEC	(4) PART NUMBER	(5) DESCRIPTION AND USABLE ON CODES (UOC)	(6) QTY
44	XBFZZ	92878	52349	.TOP HOUSING SUBASSY	
45	PAFZZ	12314	F51-21	.GROMMET, NONMETALLIC	
46	XBFZZ	92878	52348	.BRACKET, HEAT EXCHAN	1
47	XBFZZ	92878	52355	.HEAT, EXCHANGER	1
48	PAOZZ	96906	MS35649-83	.NUT, PLAIN, HEXAGON.....	1
49	PAOZZ	96906	MS35335-59	.WASHER, LOCK	
50	PAFZZ	92878	48233	.SWITCH, FLAME.....	

END OF FIGURE

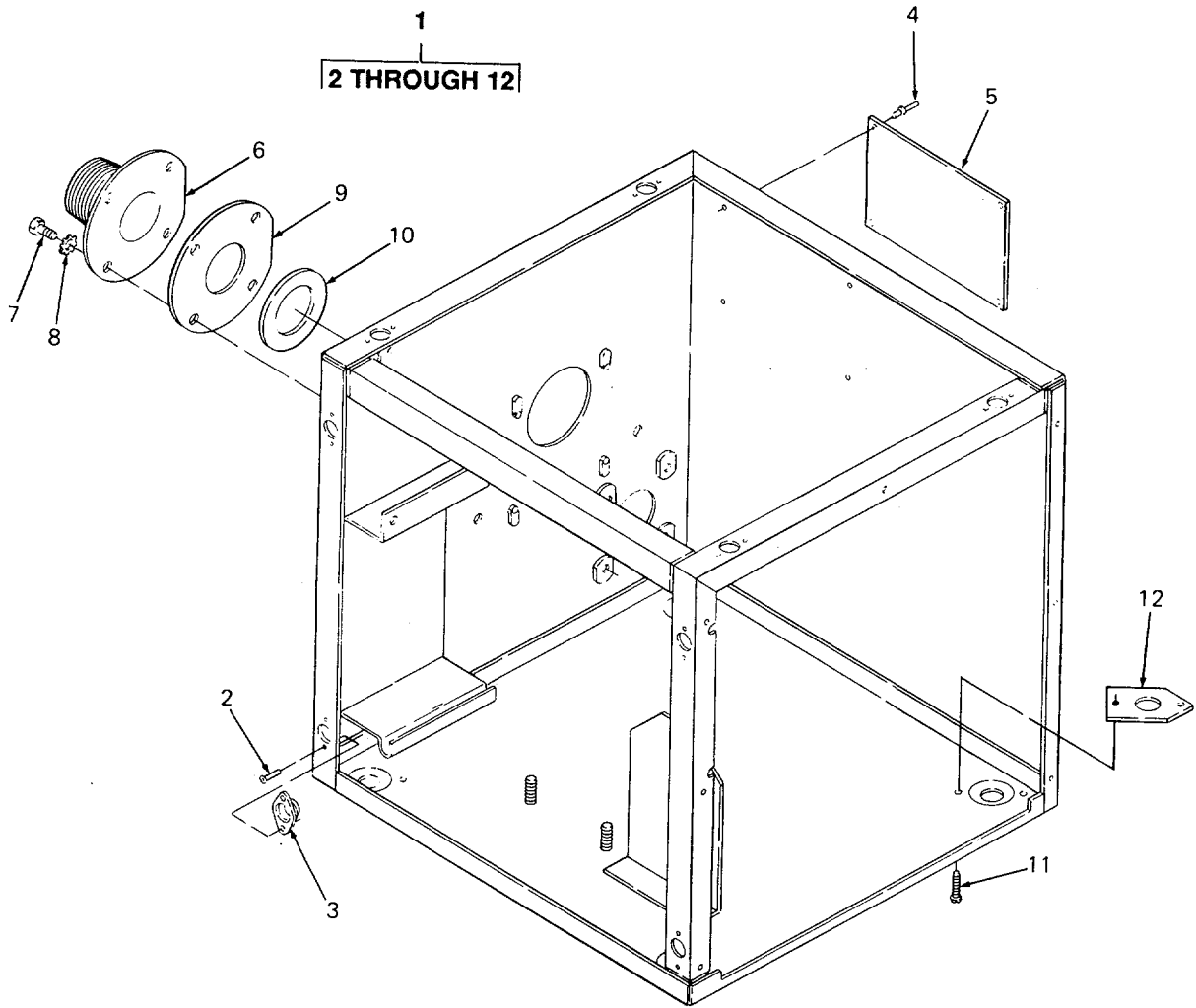


FIGURE 9. Heater Case

SECTION II

TM 9-4520-260-23P

(1) ITEM NO	(2) SMR CODE	(3) CAGEC	(4) PART NUMBER	(5) DESCRIPTION AND USABLE ON CODES (UOC)	(6) QTY
-------------------	--------------------	--------------	-----------------------	--	------------

GROUP 07 HEATER CASE ASSEMBLY

FIG. 9 HEATER CASE

1	XBFFF	92878	48280	CASE, HEATER	1
2	PAFZZ	92878	5928	.RIVET, TUBULAR	16
3	PAFZZ	71286	212-12D	.RECEPTACLE, TURNLOCK	8
4	XBOZZ	07707	SD42BS	RIVET, BLIND	4
5	XBOZZ	92878	170559	PLATE, ID	1
6	XBFFZ	92878	48506	CONNECTOR, EXHAUST	1
7	PAFZZ	80204	B1821BH025C050N	SCREW, CAP, HEXAGON H	4
8	PAFZZ	96906	MS35335-61	WASHER, LOCK	4
9	XBFFZ	92878	48077	GASKET, EXHAUST	1
10	XBFFZ	92878	47035	WASHER, EXHAUST	1
11	PAFZZ	33322	03010032-P5	SCREW, ASSEMBLED WAS	8
12	XBFFZ	92878	48664	NUT, PLATE	4

END OF FIGURE

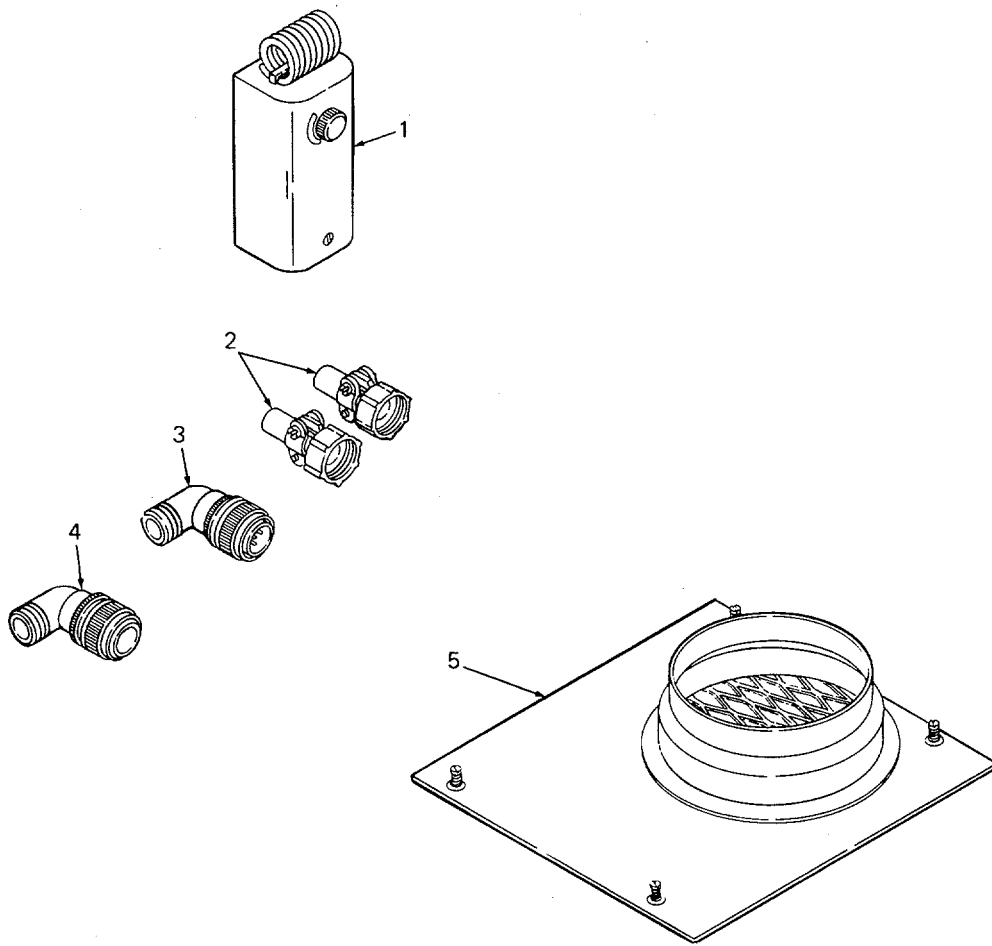


FIGURE 10. Thermostat and Connectors

SECTION II

TM 9-4520-260-23P

(1) ITEM NO	(2) SMR CODE	(3) CAGEC	(4) PART NUMBER	(5) DESCRIPTION AND USABLE ON CODES (UOC)	(6) QTY
-------------------	--------------------	--------------	-----------------------	--	------------

GROUP 08 ROOM THERMOSTAT

FIG. 10 THERMOSTAT AND CONNECTORS

1	PAOZZ	92878	68279	THERMOSTAT, SPECIAL	1
2	PAOZZ	81349	M85049/41-6A	CLAMP, CABLE, ELECTRI	2
3	PAOZZ	96906	MS3450W14S-7PX3	CONNECTOR, RECEPTACL.....	1
4	PAOZA	96906	MS3450W14S7S	CONNECTOR, RECEPTACL.....	1
5	XBOOO	92878	48278	COVER ASSEMBLY	1

END OF FIGURE

SECTION II

TM 9-4520-260-23P

(1) ITEM NO	(2) SMR CODE	(3) CAGEC	(4) PART NUMBER	(5) DESCRIPTION AND USABLE ON CODES (UOC)	(6) QTY
-------------------	--------------------	--------------	-----------------------	--	------------

GROUP 09 BULK MATERIALS LIST

FIG. BULK

1	PAOZZ	85757	4212-435	TUBING, NONMETALLIC	V
2	PAOZZ	81349	M16878/1BJE0	WIRE, ELECTRICAL.....	V
3	PAOZZ	81349	M16878/1BJE5	WIRE, ELECTRICAL.....	V
4	PAOZZ	81349	M16878/1BJE6	WIRE, ELECTRICAL.....	V
5	PAOZZ	81349	M16878/1BGE9	WIRE, ELECTRICAL.....	V
6	PAOZZ	81349	M16878/1BJE3	WIRE, ELECTRICAL.....	V
7	PAOZZ	81349	M16878/1BJE9	WIRE, ELECTRICAL.....	V
8	PAOZZ	81349	M16878/1BJE1	WIRE, ELECTRICAL.....	V
9	PAOZZ	81349	M16878/1BJE4	WIRE, ELECTRICAL.....	V
10	PAOZZ	81349	M022759/11-16-0	WIRE, ELECTRICAL.....	V
11	PAOZZ	81349	M16878/1BJE8	WIRE, ELECTRICAL.....	V
12	PAOZZ	81349	M22759/11-16-7	WIRE, ELECTRICAL.....	V
13	PAOZZ	81349	M16878/1BJE2	WIRE, ELECTRICAL.....	V

END OF FIGURE

BULK-1

CROSS-REFERENCE INDEXES

NATIONAL STOCK NUMBER INDEX

STOCK NUMBER	FIG.	ITEM	STOCK NUMBER	FIG.	ITEM
5310-00-014-5850	8	13	5310-00-934-9748	2	9
5305-00-050-9234	8	12	5310-00-934-9761	1	24
5305-00-054-5651	2	11	4730-00-956-5238	3	2
5310-00-058-3599	2	10		3	4
5310-00-067-6357	8	30	5305-00-988-7601	41	13
5305-00-071-2087	8	10		8	6
5305-00-071-2506	8	29	2920-01-024-3965	8	2
	9	7	5940-01-082-3321	7	18
5330-00-087-3612	3	17		8	35
5920-00-131-9915	2	17	5330-01-087-8327	4	20
5330-00-166-0994	4	18	5330-01-087-8831	8	8
5935-00-167-7775	7	29	4520-01-087-9511	8	3
5940-00-204-8966	7	21	5310-01-145-4564	4	12
4730-00-230-1996	3	5		8	39
5310-00-250-9477	3	7	5935-01-200-0827	10	2
5310-00-275-9310	8	48	5320-01-201-7932	1	19
5305-00-281-3118	8	25	5340-01-242-7256	2	5
5305-00-281-3120	8	19	5940-01-303-7417	7	13
5310-00-337-8329	1	4			
	1	9			
	2	7			
5310-00-527-3634	3	8			
	9	8			
5930-00-539-7013	2	3			
6145-00-542-6573	BULK	9			
5310-00-543-2740	8	11			
5935-00-549-3279	10	4			
5310-00-614-3552	8	49			
4730-00-618-2952	4	6			
6145-00-643-0650	BULK	7			
6145-00-652-1441	BULK	5			
5930-00-655-1514	2	4			
6145-00-702-8816	BULK	11			
2910-00-710-6054	3	9			
5325-00-726-6699	1	3			
	1	8			
	2	8			
6145-00-754-8082	BULK	13			
5940-00-813-0698	7	11			
6145-00-822-1424	BULK	4			
6145-00-822-1425	BULK	3			
6145-00-822-1427	BULK	2			
5930-00-876-8493	8	40			
5320-00-879-4473	1	16			
5920-00-892-9311	2	16			
6685-00-893-9020	10	1			
2910-00-905-9792	3	13			
2910-00-906-6264	4	9			
4730-00-908-3194	8	4			
4730-00-908-6292	8	22			

CROSS-REFERENCE INDEXES

CAGEC	PART NUMBER	PART NUMBER INDEX		FIG.	ITEM
			STOCK NUMBER		
14726	B-1870BN			7	27
98410	BB8141		5940-01-303-7417	7	13
80204	B1821BH025C050N		5305-00-071-2506	8	29
				9	7
78553	C-4980A4-35			8	42
75307	C-54-503		5940-01-082-3321	7	18
				8	35
11583	CH47		2920-01-024-3965	8	2
81349	FHN26G1		5920-00-892-9311	2	16
81349	F02A32V20A		5920-00-131-9915	2	17
12314	F51-21			8	45
96906	MS16995-25		5305-00-988-7601	4	13
				8	6
96906	MS25036-101		5940-00-813-0698	7	11
96906	MS25036-102		5940-00-204-8966	7	21
96906	MS27144-1		5935-00-167-7775	7	29
96906	MS27183-42		5310-00-014-5850	8	13
96906	MS3450W14S-7P			2	14
96906	MS3450W14S-7PX3			10	3
96906	MS3450W14S-7SX4			2	13
96906	MS3450W14S7S		5935-00-549-3279	10	4
96906	MS35058-22		5930-00-655-1514	2	4
96906	MS35333-154		5310-01-145-4564	4	12
				8	39
96906	MS35333-74		5310-00-543-2740	8	11
96906	MS35335-57		5310-00-058-3599	2	10
96906	MS35335-59		5310-00-614-3552	8	49
96906	MS35335-61		5310-00-527-3634	3	8
				9	8
96906	MS35649-2254		5310-00-250-9477	3	7
96906	MS35649-244		5310-00-934-9748	2	9
96906	MS35649-264		5310-00-934-9761	1	24
96906	MS35649-83		5310-00-275-9310	8	48
96906	MS35842-11		4730-00-908-3194	8	4
96906	MS35842-14		4730-00-908-6292	8	22
96906	MS45904-69		5310-00-067-6357	8	30
96906	MS51021-32		5305-00-281-3118	8	25
96906	MS51023-48		5305-00-281-3120	8	19
96906	MS51086-1		2910-00-905-9792	3	13
96906	MS51091-4		5330-00-087-3612	3	17
96906	MS51321-1		2910-00-710-6054	3	9
96906	MS51846-1		4730-00-230-1996	3	5
96906	MS51861-22C			8	38
96906	MS51957-17		5305-00-054-5651	2	11
96906	MS51957-68		5305-00-050-9234	8	12
96906	MS51957-84		5305-00-071-2087	8	10
81349	M16878/1BGE9		6145-00-652-1441	BULK	5
81349	M16878/1BJE0		6145-00-822-1427	BULK	2
81349	M16878/1BJE1			BULK	8
81349	M16878/1BJE2		6145-00-754-8082	BULK	13
81349	M16878/1BJE3			BULK	6

CROSS-REFERENCE INDEXES

CAGEC	PART NUMBER	PART NUMBER INDEX		FIG.	ITEM
			STOCK NUMBER		
81349	M16878/1BJE4		6145-00-542-6573	BULK	9
81349	M16878/1BJE5		6145-00-822-1425	BULK	3
81349	M16878/1BJE6		6145-00-822-1424	BULK	4
31349	M16878/1BJE8		6165-00-702-8816	BULK	11
81349	M16878/1BJE9		6145-00-643-0650	BULK	7
81349	M22759/11-16-0			BULK	10
81349	M22759/11-16-7			BULK	12
81349	M5423/02-01		5930-00-539-7013	2	3
81349	M83248/1-018		5330-00-166-0994	4	18
81349	M85049/41-6A		5935-01-200-0827	10	2
06402	N 1 480 08		5340-01-242-7256	2	5
99742	P-69 2 IN.			8	23
14726	R4161FT			7	25
07707	SD32BS		5320-01-201-7932	1	19
07707	SD42BS		5320-00-879-4473	1	16
				9	4
39766	XC206			8	14
62119	YZ1U020K			8	15
60399	0-5520-4			8	20
96152	013440		2910-00-906-6264	4	9
33322	03010032-P5			1	22
				1	25
				5	2
				6	2
				8	41
				9	11
33322	03070032-P5			1	12
90005	06R018-027			3	12
75511	10-3794			8	24
92878	10512-01			4	7
92878	10619-05			8	32
92878	10664-12			3	1
92878	10664-9			3	3
92878	10766-10.5			7	6
92378	10766-9			7	15
92878	10767-23.5			7	19
				8	37
92878	10768-5			7	10
92878	10769-15			7	7
92878	10769-17			7	16
92878	10769-8.5			7	8
92878	10770-5.5			7	20
92878	10771-26			7	4
92878	10772-19			7	2
92878	10772-24			7	24
92878	10772-6			7	22
92878	10774-5			7	12
92878	10774-9.5			7	9
92878	10781-22			7	17
				8	36
92878	10781-6			7	26

CROSS-REFERENCE INDEXES

CAGEC	PART NUMBER	PART NUMBER INDEX		FIG.	ITEM
			STOCK NUMBER		
92878	10781-8			7	28
92878	10818-10			7	14
92878	10895-20.5			7	3
92878	10898-21			7	5
92878	168527			1	27
92878	168530			1	18
92878	168680			8	7
92878	168681		4520-01-087-9511	8	3
92878	170002			3	14
92878	170308			8	31
92878	170559			9	5
62119	170816			8	17
87148	188			1	26
62119	2ST18A			8	16
27345	21			8	18
71286	212-12D			1	20
				9	3
71286	26S8-3		5325-00-726-6699	1	3
				1	8
				2	8
71286	2600LW		5310-00-337-8329	1	4
				1	9
				2	7
09505	268P			3	6
30327	269-P 1/4 X 1/8		4730-00-956-5238	3	2
				3	4
00779	34113			7	23
92878	4011			1	5
85757	4212-435			BULK	1
92878	4347		5930-00-876-8493	8	40
06402	4500700IGIPA3401			2	6
	.185				
92878	47035			9	10
92878	47413			8	26
92878	479012			3	11
92878	47971			4	8
92878	48051			2	15
92878	48077			9	9
92878	48085			2	1
92878	48113-02			4	17
92878	48227			1	13
92878	48228			8	9
92878	48233			8	50
92878	48260			7	1
92878	48272			1	2
92878	48273			1	1
92878	48274			1	6
92878	48275			1	10
92878	48276			1	7
92878	48278			10	5
92878	48280			9	1

CROSS-REFERENCE INDEXES

CAGEC	PART NUMBER	PART NUMBER INDEX		FIG.	ITEM
			STOCK NUMBER		
92878	48285			1	15
92878	48288			1	14
0LLG1	48375			6	1
92878	48506			9	6
92878	48522			1	23
92878	48524			1	21
92878	48528			8	27
92878	48642			1	11
92878	48664			9	12
92878	48715			8	28
92878	48741			2	2
92878	48755			1	17
92878	49031			4	10
92878	49032			4	14
92878	49093		5330-01-087-8831	8	8
92878	49189			4	19
92878	49320			8	1
92878	49323			4	16
92878	49342-02			8	5
92878	49384			4	5
92878	49385			8	33
92878	49399			8	21
92878	49401			4	22
92878	4941001			5	1
92878	49419			4	15
92878	5062801			4	3
92878	5062901			4	4
92878	50632-48			4	1
92878	52337			4	21
92878	52348			8	46
92878	52349			8	44
92878	52355			8	47
92878	52356			8	34
92878	52357			8	43
92878	5404			4	11
27877	568-006		5330-01-087-8827	4	20
92878	5928			9	2
92878	5970			4	2
92878	65-248			3	15
93061	68CA-4-2		4730-00-618-2952	4	6
92878	68279		6685-00-893-9020	10	1
92878	6833001			1	28
19207	7413774			3	10
92878	95-192			3	16
02660	9760-14			2	12

CROSS REFERENCE INDEXES

FIG.	ITEM	FIGURE AND ITEM NUMBER INDEX		PART NUMBER
		STOCK NUMBER	CAGEC	
BULK	1		85757	4212-435
BULK	2	6145-00-822-1427	81349	M16878/1BJE0
BULK	3	6145-00-822-1425	81349	M16878/1BJE5
BULK	4	6145-00-822-1424	81349	M16878/1BJE6
BULK	5	6145-00-652-1441	81349	M16878/1BGE9
BULK	6		81349	M16878/1BJE3
BULK	7	6145-00-643-0650	81349	M16878/1BJE9
BULK	8		81349	M16878/1BJE1
BULK	9	6145-00-542-6573	81349	M16878/1BJE4
BULK	10		81349	M22759/11-16-0
BULK	11	6145-00-702-8816	81349	M16878/1BJE8
BULK	12		81349	M22759/11-16-7
BULK	13	6145-00-754-8082	81349	M16878/1BJE2
1	1		92878	48273
1	2		92878	48272
1	3	5325-00-726-6699	71286	26S8-3
1	4	5310-00-337-8329	71286	2600LW
1	5		92878	4011
1	6		92878	48274
1	7		92878	48276
1	8	5325-00-726-6699	71286	26S8-3
1	9	5310-00-337-8329	71286	2600LW
1	10		92878	48275
1	11		92878	48642
1	12		33322	03070032-P5
1	13		92878	48227
1	14		92878	48288
1	15		92878	48285
1	16	5320-00-879-4473	07707	SD42BS
1	17		92878	48755
1	18		92878	168530
1	19	5320-01-201-7932	07707	SD32BS
1	20		71286	212-12D
1	21		92878	48524
1	22		33322	03010032-P5
1	23		92878	48522
1	24	5310-00-934-9761	96906	MS35649-264
1	25		33322	03010032-P5
1	26		87148	188
1	27		92878	168527
1	28		92878	6833001
2	1		92878	48085
2	2		92878	48741
2	3	5930-00-539-7013	81349	M5423/02-01
2	4	5930-00-655-1514	96906	MS35058-22
2	5	5340-01-242-7256	06402	N 1 480 08
2	6		06402	4500700IGIPA3401
				.185
2	7	5310-00-337-8329	71286	2600LW
2	8	5325-00-726-6699	71286	26S8-3
2	9	5310-00-934-9748	96906	MS35649-244

CROSS REFERENCE INDEXES

FIG.	ITEM	FIGURE AND ITEM NUMBER INDEX		PART NUMBER
		STOCK NUMBER	CAGEC	
2	10	5310-00-058-3599	96906	MS35335-57
2	11	5305-00-054-5651	96906	MS51957-17
2	12		02660	9760-14
2	13		96906	MS3450W14S-7SX4
2	14		96906	MIS3450W14S-7P
2	15		92878	48051
2	16	5920-00-892-9311	81349	FHN26G1
2	17	5920-00-131-9915	81349	F02A32V20A
3	1		92878	10664-12
3	2	4730-00-956-5238	30327	269-P 1/4 X 1/8
3	3		92878	10664-9
3	4	4730-00-956-5238	30327	269-P 1/4 X 1/8
3	5	4730-00-230-1996	96906	MS51846-1
3	6		09505	268P
3	7	5310-00-250-9477	96906	MS35649-2254
3	8	5310-00-527-3634	96906	MS35335-61
3	9	2910-00-710-6054	96906	MS51321-1
3	10		19207	7413774
3	11		92878	479012
3	12		90005	06R018-027
3	13	2910-00-905-9792	96906	MS51086-1
3	14		92878	170002
3	15		92878	65-248
3	16		92878	95-192
3	17	5330-00-087-3612	96906	MS51091-4
4	1		92878	50632-48
4	2		92878	5970
4	3		92878	5062801
4	4		92878	5062901
4	5		92878	49384
4	6	4730-00-618-2952	93061	63CA-4-2
4	7		92878	10512-01
4	8		92878	47971
4	9	2910-00-906-6264	96152	013440
4	10		92878	49031
4	11		92878	5404
4	12	5310-01-145-4564	96906	MS35333-154
4	13	5305-00-988-7601	96906	MS16995-25
4	14		92878	49032
4	15		92878	49419
4	16		92878	49323
4	17		92878	48113-02
4	18	5330-00-166-0994	81349	M83248/1-018
4	19		92878	49189
4	20	5330-01-087-8827	27877	568-006
4	21		92878	52337
4	22		92878	49401
5	1		92878	4941001
5	2		33322	03010032-P5
6	1		0LLG1	48375
6	2		33322	03010032-P5

CROSS REFERENCE INDEXES

FIG.	ITEM	FIGURE AND ITEM NUMBER INDEX		PART NUMBER
		STOCK NUMBER	CAGEC	
7	1		92878	48260
7	2		92878	10772-19
7	3		92878	10895-20.5
7	4		92878	10771-26
7	5		92878	10898-21
7	6		92878	10766-10.5
7	7		92878	10769-15
7	8		92878	10769-8.5
7	9		92878	10774-9.5
7	10		92878	10768-5
7	11	5940-00-813-0698	96906	MS25036-101
7	12		92878	10774-5
7	13	5940-01-303-7417	98410	BB8141
7	14		92878	10818-10
7	15		92878	10766-9
7	16		92878	10769-17
7	17		92878	10781-22
7	18	5940-01-082-3321	75307	C-54-503
7	19		92878	10767-23.5
7	20		92878	10770-5.5
7	21	5940-00-204-8966	96906	MS25036-102
7	22		92878	10772-6
7	23		00779	34113
7	24		92878	10772-24
7	25		14726	R4161FT
7	26		92878	10781-6
7	27		14726	B-1870BN
7	28		92878	10781-8
7	29	5935-00-167-7775	96906	MS27144-1
8	1		92878	49320
8	2	2920-01-024-3965	11583	CH47
8	3	4520-01-087-9511	92878	168681
8	4	4730-00-908-3194	96906	MS35842-11
8	5		92878	49342-02
8	6	5305-00-988-7601	96906	MS16995-25
8	7		92878	168680
8	8	5330-01-087-8831	92878	49093
8	9		92878	48228
8	10	5305-00-071-2087	96906	MS51957-84
8	11	5310-00-543-2740	96906	MS35333-74
8	12	5305-00-050-9234	96906	MS51957-68
8	13	5310-00-014-5850	96906	MS27183-42
8	14		39766	XC206
6	15		62119	YZ1U020K
a	16		62119	2ST18A
8	17		62119	170816
8	18		27345	21
8	19	5305-00-281-3120	96906	MS51023-48
8	20		60399	0-5520-4
8	21		92878	49399
8	22	4730-00-908-6292	96906	MS35842-14

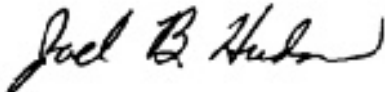
CROSS REFERENCE INDEXES

FIG.	ITEM	FIGURE AND ITEM NUMBER INDEX		PART NUMBER
		STOCK NUMBER	CAGEC	
8	23		99742	P-69 2 IN.
8	24		75511	10-3794
8	25	5305-00-281-3118	96906	MS51021-32
8	26		92878	47413
8	27		92878	48528
8	28		92878	48715
8	29	5305-00-071-2506	80204	B1821BH025C050N
8	30	5310-00-067-6357	96906	MS45904-69
8	31		92878	170308
8	32		92878	10619-05
8	33		92878	49385
8	34		92878	52356
8	35	5940-01-082-3321	75307	C-54-503
8	36		92878	10781-22
8	37		92878	10767-23.5
8	38		96906	MS51861-22C
8	39	5310-01-145-4564	96906	MS35333-154
8	40	5930-00-876-8493	92878	4347
8	41		33322	03010032-P5
8	42		78553	C-4980A4-35
8	43		92878	52357
8	44		92878	52349
8	45		12314	F51-21
8	46		92878	52348
8	47		92878	52355
8	43	5310-00-275-9310	96906	MS35649-83
8	49	5310-00-614-3552	96906	MS35335-59
8	50		92878	48233
9	1		92878	48280
9	2		92878	5928
9	3		71286	212-12D
9	4		07707	SD42BS
9	5		92878	170559
9	6		92878	48506
9	7	5305-00-071-2506	80204	B1821BH025C050N
9	8	5310-00-527-3634	96906	MS35335-61
9	9		92878	48077
9	10		92878	47035
9	11		33322	03010032-P5
9	12		92878	48664
10	1	6685-00-893-9020	92878	68279
10	2	5935-01-200-0827	81349	M85049/41-6A
10	3		96906	MS3450W14S-7PX3
10	4	5935-00-549-3279	96906	MS3450W14S7S
10	5		92878	48278

TM 9-4520-260-23P

By Order of the Secretary of the Army:

Official:



JOEL B. HUDSON
*Acting Administrative Assistant to the
Secretary of the Army*
00574

DENNIS J. REIMER
*General, United States Army
Chief of Staff*

DISTRIBUTION:

To be distributed in accordance with DA Form 12-25-E, block no. 6274, requirements for TM 9-4520-260-23P.

RECOMMENDED CHANGES TO EQUIPMENT TECHNICAL PUBLICATIONS



THEN...JOT DOWN THE DOPE ABOUT IT ON THIS FORM. CAREFULLY TEAR IT OUT, FOLD IT AND DROP IT IN THE MAIL.

SOMETHING WRONG WITH PUBLICATION

FROM: (PRINT YOUR UNIT'S COMPLETE ADDRESS)

DATE SENT

PUBLICATION NUMBER	PUBLICATION DATE	PUBLICATION TITLE
--------------------	------------------	-------------------

BE EXACT PIN-POINT WHERE IT IS				IN THIS SPACE, TELL WHAT IS WRONG AND WHAT SHOULD BE DONE ABOUT IT.
PAGE NO.	PARA-GRAPH	FIGURE NO.	TABLE NO.	

TEAR ALONG PERFORATED LINE

PRINTED NAME, GRADE OR TITLE AND TELEPHONE NUMBER	SIGN HERE
---	-----------

DA FORM 1 JUL 79 2028-2

PREVIOUS EDITIONS ARE OBSOLETE.

P.S.--IF YOUR OUTFIT WANTS TO KNOW ABOUT YOUR RECOMMENDATION MAKE A CARBON COPY OF THIS AND GIVE IT TO YOUR HEADQUARTERS.

The Metric System and Equivalents

Linear Measure

1 centimeter = 10 millimeters = .39 inch
 1 decimeter = 10 centimeters = 3.94 inches
 1 meter = 10 decimeters = 39.37 inches
 1 dekameter = 10 meters = 32.8 feet
 1 hectometer = 10 dekameters = 328.08 feet
 1 kilometer = 10 hectometers = 3,280.8 feet

Weights

1 centigram = 10 milligrams = .15 grain
 1 decigram = 10 centigrams = 1.54 grains
 1 gram = 10 decigrams = .035 ounce
 1 dekagram = 10 grams = .35 ounce
 1 hectogram = 10 dekagrams = 3.52 ounces
 1 kilogram = 10 hectograms = 2.2 pounds
 1 quintal = 100 kilograms = 220.46 pounds
 1 metric ton = 10 quintals = 1.1 short tons

Liquid Measure

1 centiliter = 10 milliliters = .34 fl. ounce
 1 deciliter = 10 centiliters = 3.38 fl. ounces
 1 liter = 10 deciliters = 33.81 fl. ounces
 1 dekaliter = 10 liters = 2.64 gallons
 1 hectoliter = 10 dekaliters = 26.42 gallons
 1 kiloliter = 10 hectoliters = 264.18 gallons

Square Measure

1 sq. centimeter = 100 sq. millimeters = .155 sq. inch
 1 sq. decimeter = 100 sq. centimeters = 15.5 sq. inches
 1 sq. meter (centare) = 100 sq. decimeters = 10.76 sq. feet
 1 sq. dekameter (are) = 100 sq. meters = 1,076.4 sq. feet
 1 sq. hectometer (hectare) = 100 sq. dekameters = 2.47 acres
 1 sq. kilometer = 100 sq. hectometers = .386 sq. mile

Cubic Measure

1 cu. centimeter = 1000 cu. millimeters = .06 cu. inch
 1 cu. decimeter = 1000 cu. centimeters = 61.02 cu. inches
 1 cu. meter = 1000 cu. decimeters = 35.31 cu. feet

Approximate Conversion Factors

To change	To	Multiply by	To change	To	Multiply by
inches	centimeters	2.540	ounce-inches	newton-meters	.007062
feet	meters	.305	centimeters	inches	.394
yards	meters	.914	meters	feet	3.280
miles	kilometers	1.609	meters	yards	1.094
square inches	square centimeters	6.451	kilometers	miles	.621
square feet	square meters	.093	square centimeters	square inches	.155
square yards	square meters	.836	square meters	square feet	10.764
square miles	square kilometers	2.590	square meters	square yards	1.196
acres	square hectometers	.405	square kilometers	square miles	.386
cubic feet	cubic meters	.028	square hectometers	acres	2.471
cubic yards	cubic meters	.765	square kilometers	square miles	2.471
fluid ounces	milliliters	29.573	cubic meters	cubic feet	35.315
pints	liters	.473	cubic meters	cubic yards	1.308
quarts	liters	.946	milliliters	fluid ounces	.034
gallons	liters	3.785	liters	pints	2.113
ounces	grams	28.349	liters	quarts	1.057
pounds	kilograms	.454	grams	gallons	.264
short tons	metric tons	.907	grams	ounces	.035
pound-feet	newton-meters	1.356	kilograms	pounds	2.205
pound-inches	newton-meters	.11296	metric tons	short tons	1.102

Temperature (Exact)

°F	Fahrenheit temperature	5/9 (after subtracting 32)	Celsius temperature	°C
----	------------------------	----------------------------	---------------------	----

PIN: 073964-000